

ТЕРМИНАЛЫ МУХ *LAUXANIIDAE* (DIPTERA), НАЙДЕННЫХ В ЭСТОНИИ, ЛАТВИИ И ЛИТВЕ

Э. Ремм, К. Эльберг

Резюме

Настоящая статья является второй из серии статей, посвященных изучению мух семейства *Lauxaniidae* Эстонии, Латвии и Литвы. В первой статье (Ремм, 1972) опубликован список видов с данными по их распространению, численности и фенологии. Почти все прибалтийские виды *Lauxaniidae* можно определить по таблицам в «Определителе насекомых Европейской части СССР» 5,2 (Штакельберг, 1970), но в некоторых случаях, особенно при плохой сохранности материала (в спирте или на вате), необходимо изучение терминалов самцов и самок.

В статье впервые публикуются рисунки терминалов всех 45 видов *Lauxaniidae*, найденных в Прибалтике. Установлено, что у всех видов терминалы имеют признаки, характерные для каждого отдельного вида. Приводятся некоторые сравнительно-морфологические закономерности в строении терминалов *Lauxaniidae*. Указывается на существование особого органа, расположенного в боковой мембране брюшка у самок видов *Luciella decempunctata* Fall., *L. pallidiventris* Fall., *L. platycephala* Lw. и *L. rorida* Fall. Функция этой структуры до сих пор не установлена.

В конце статьи приведены фаунистические данные двух видов, новых для фауны Прибалтики и найденных именно при изучении терминалов *Lauxaniidae*.

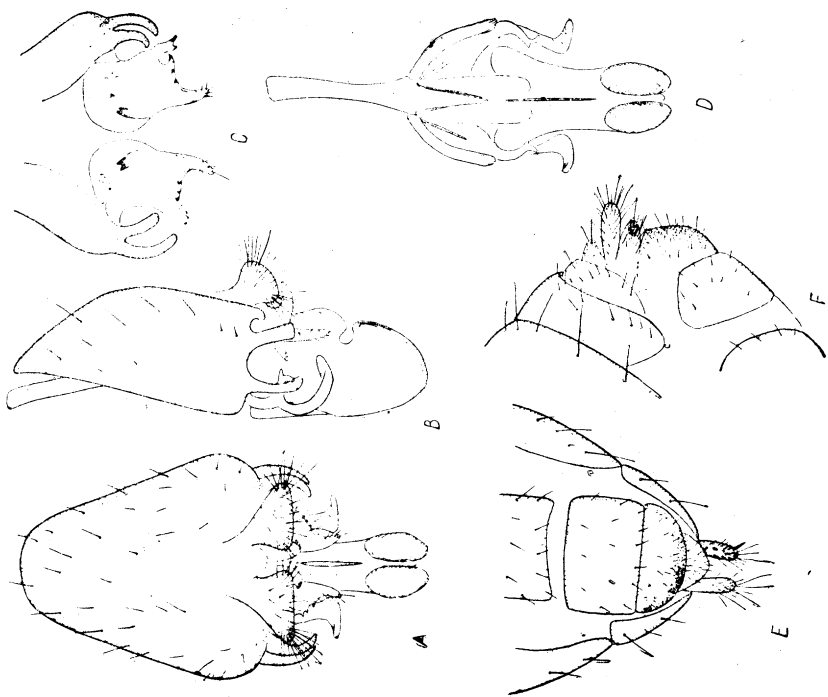


Fig. 2. *Homoneura bitibrata* (Lw.):

A — hypopygium, dorsal view; B — ditto, lateral view; C — details of hypopygium from inside; D — aedeagus and associated sclerites, dorsal view; E — apical part of female abdomen, ventral view; F — ditto, lateral view.

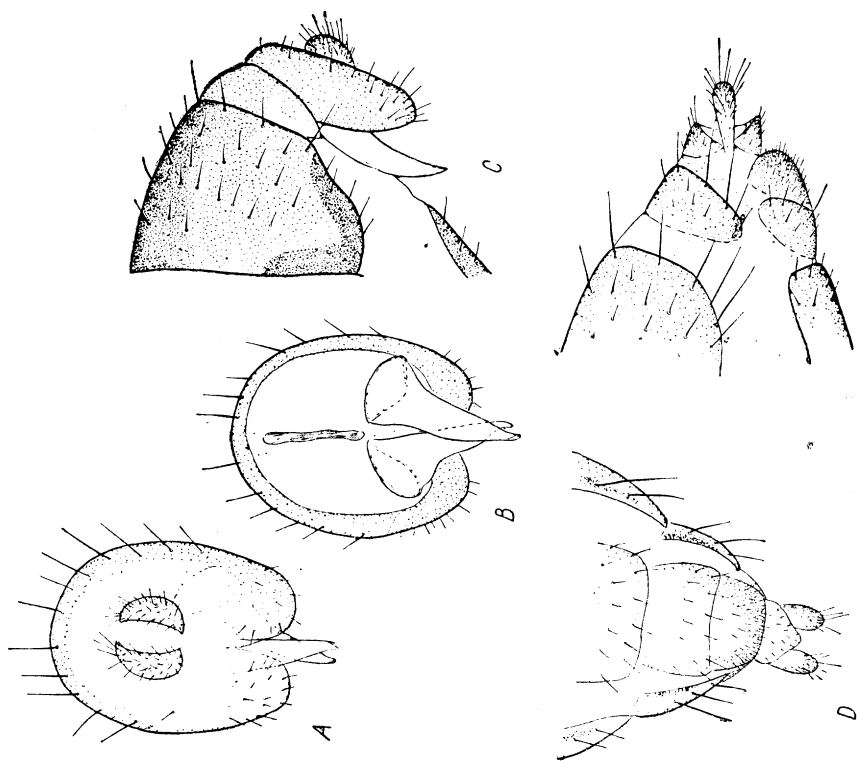


Fig. 1. *Trigonometopus frontalis* (Meig.):

A — hypopygium, dorsal view; B — ditto, ventral view; C — hypopygium with protandrium and the sixth segment of abdomen, lateral view; D — apical part of female abdomen, ventral view; E — ditto, lateral view.

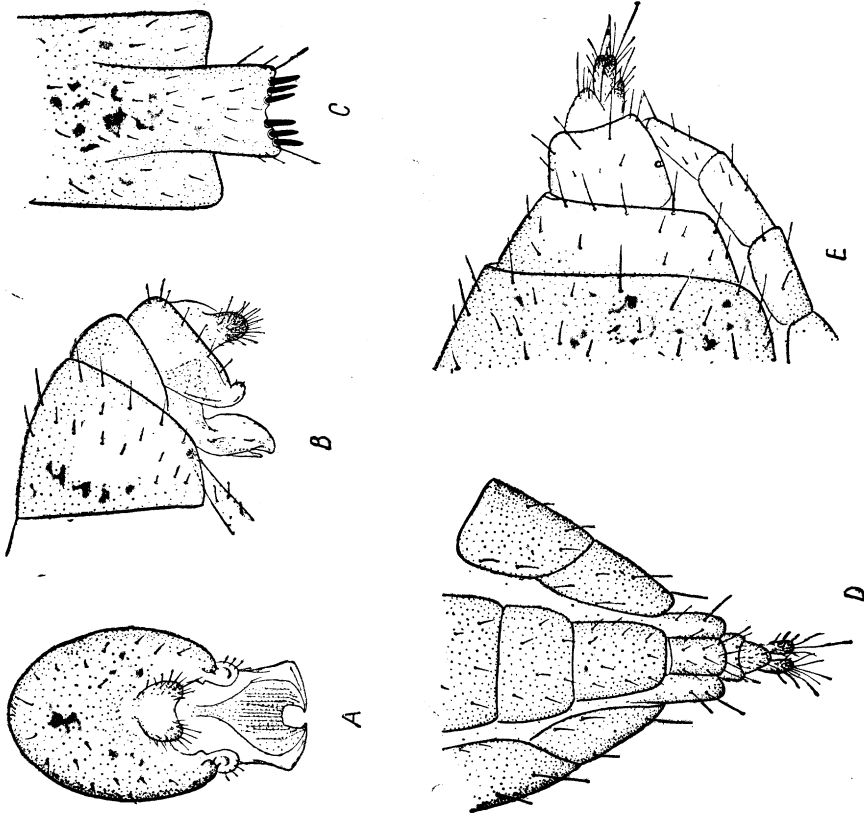


Fig. 3. *Homoneura interstincta* (Fall.):

A — hypopygium, dorsal view; B — hypopygium, protandrium, and the sixth tergite and sternite in lateral view; C — the sixth sternite, ventral view; D — apical part of female abdomen, ventral view; E — ditto, lateral view.

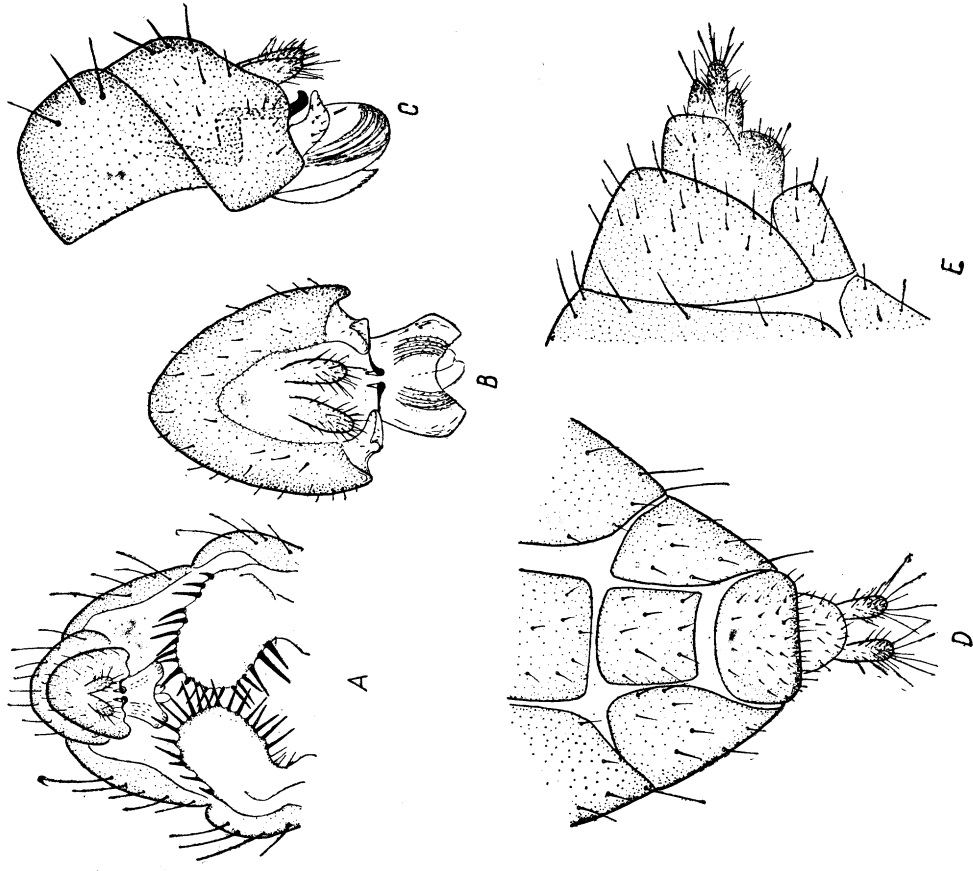


Fig. 4. *Homoneura lamellata* (Beck.):

A — apical part of male abdomen, ventral view; B — hypopygium, dorsal view; C — hypopygium with protandrium, lateral view; D — apical part of female abdomen, ventral view; E — ditto, lateral view.

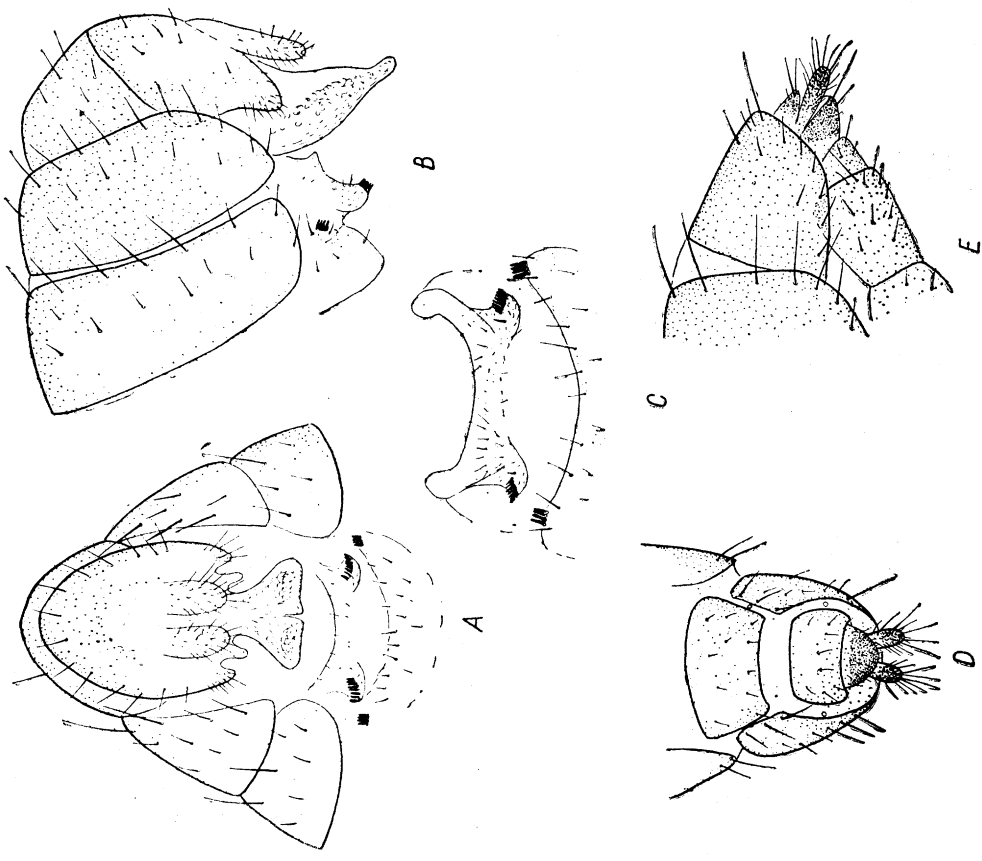


Fig. 6. *Homoneura minor* (Beck.):

A — hypopygium dorsally with protandrium, and the fifth and the sixth segments of abdomen; B — apical part of male abdomen, lateral view; C — the fifth and the sixth sternites, ventral view; D — apical part of female abdomen, ventral view; E — ditto, lateral view.

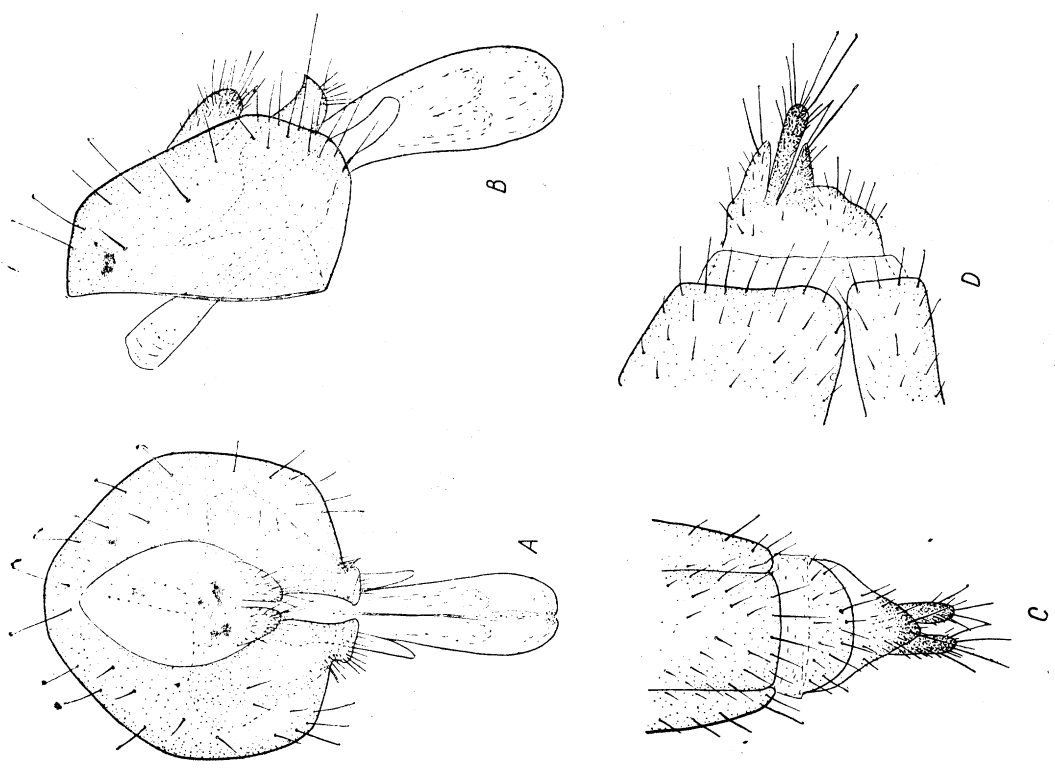


Fig. 5. *Homoneura limnea* (Beck.):

A — hypopygium, dorsal view; B — ditto, lateral view; C — female terminalia, ventral view; D — ditto, lateral view.

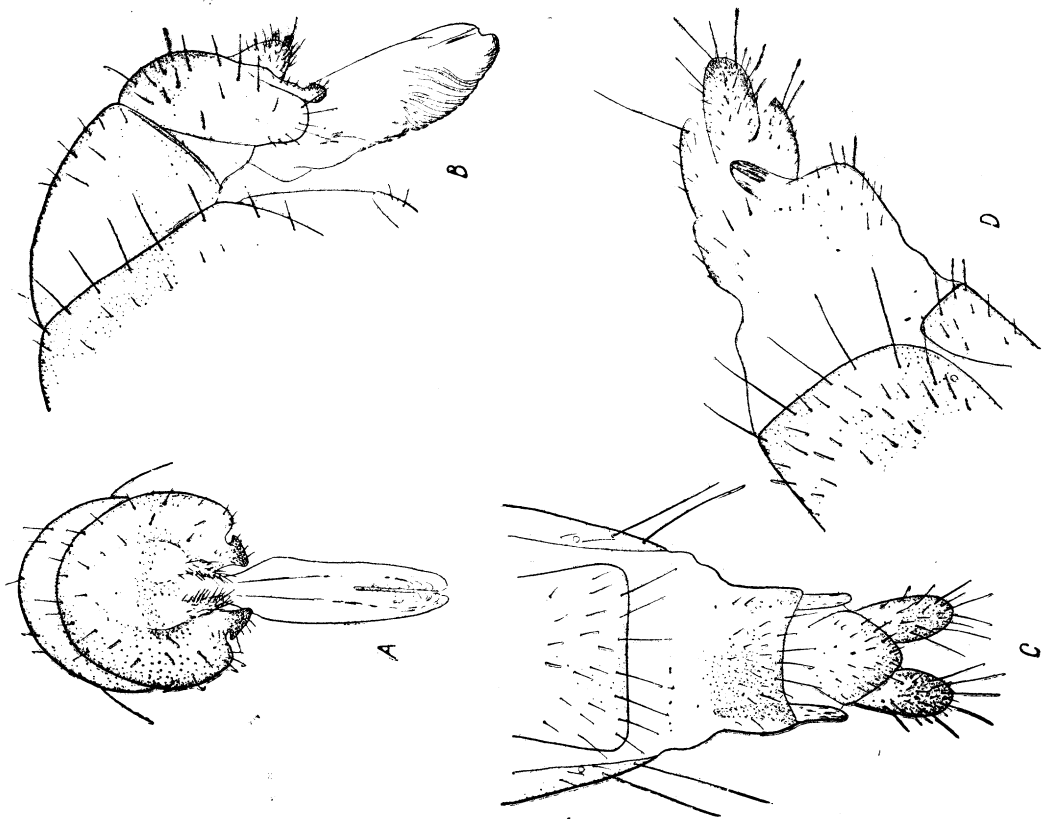


Fig. 7. *Homoneura notata* (Fall.):

A — hypopygium with protandrium, dorsal view; B — ditto, lateral view; C — apical part of female abdomen, ventral view; D — ditto, lateral view.

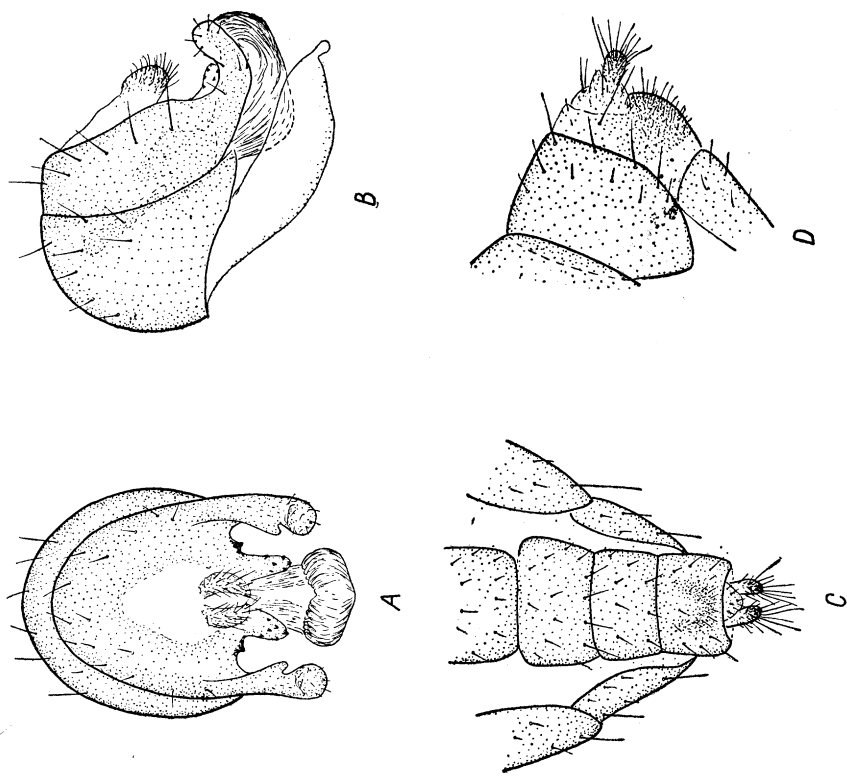


Fig. 8. *Homoneura tenera* (Lw.):

A — hypopygium with protandrium, dorsal view; B — ditto, lateral view; C — apical part of female abdomen, ventral view; D — ditto, lateral view.

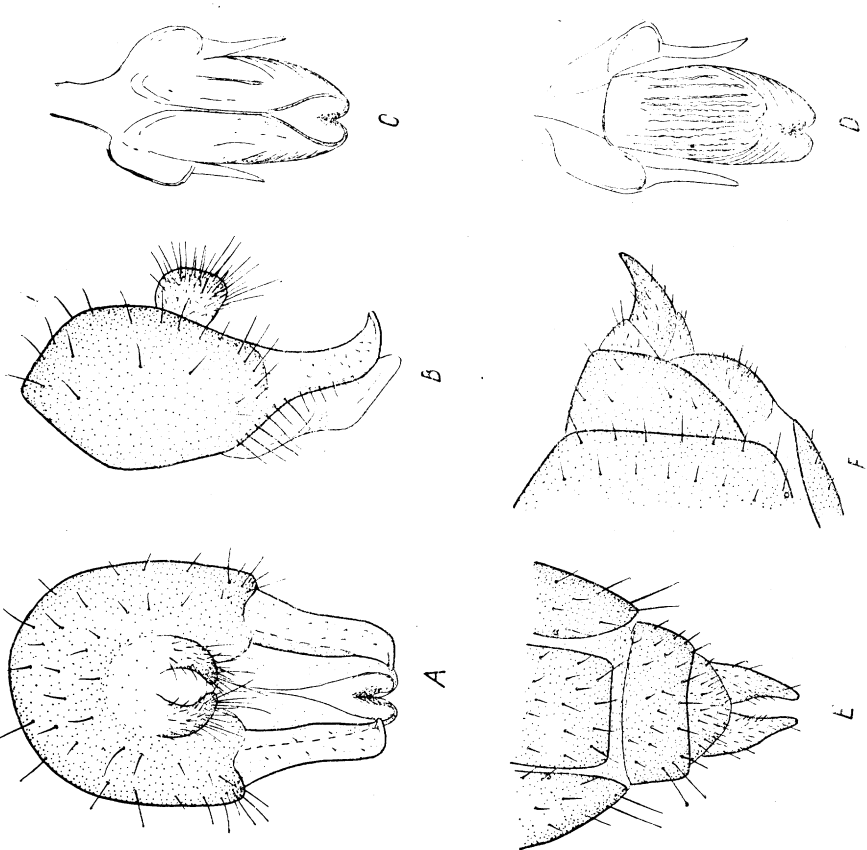


Fig. 9. *Homoneura tesquae* (Beck.):

A — hypopygium, dorsal view; B — ditto, ventral view; C — aedeagus with associated sclerites, dorsal view; D — ditto, ventral view; E — apical part of female abdomen, ventral view; F — ditto, lateral view.

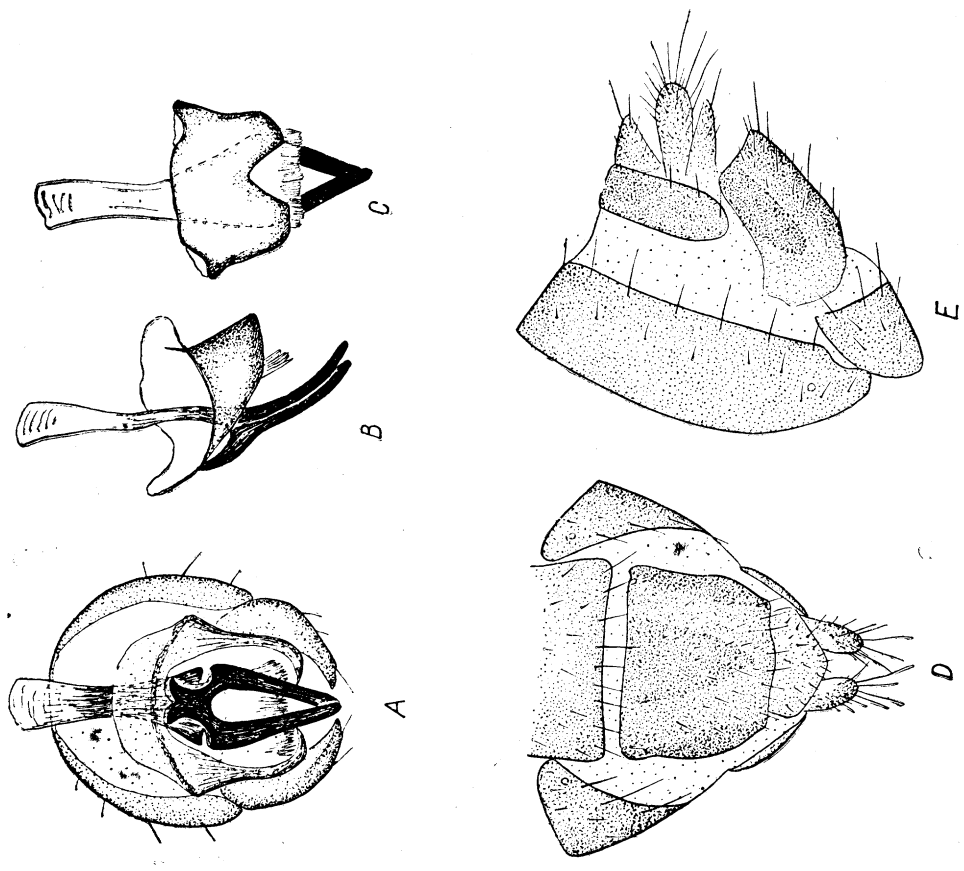


Fig. 10. *Minettia austriaca* Hennig:

A — hypopygium from inside; B — inner genitalia, lateral view; C — ditto, dorsal view; D — female terminalia, ventral view; E — ditto, lateral view.

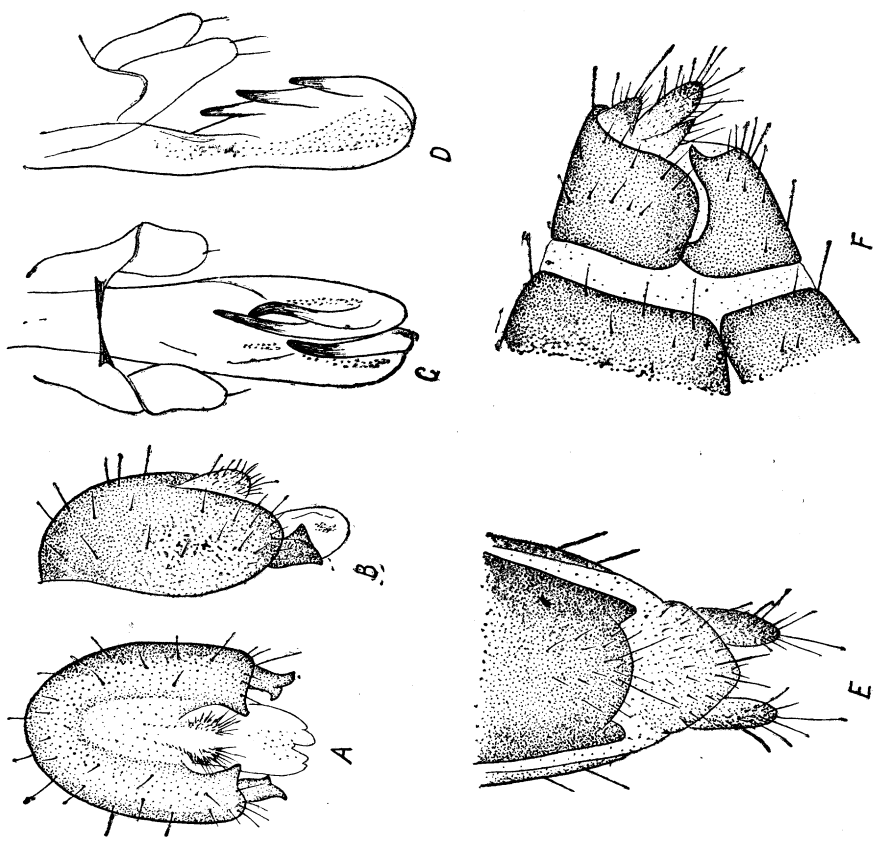


Fig. 12. *Minettia helvola* (Beck.):

A — hypopygium, dorsal view; B — hypopygium, lateral view; C — aedeagus with associated structures, ventral view; D — ditto, lateral view; E — apical part of female abdomen, ventral view; F — ditto, lateral view.

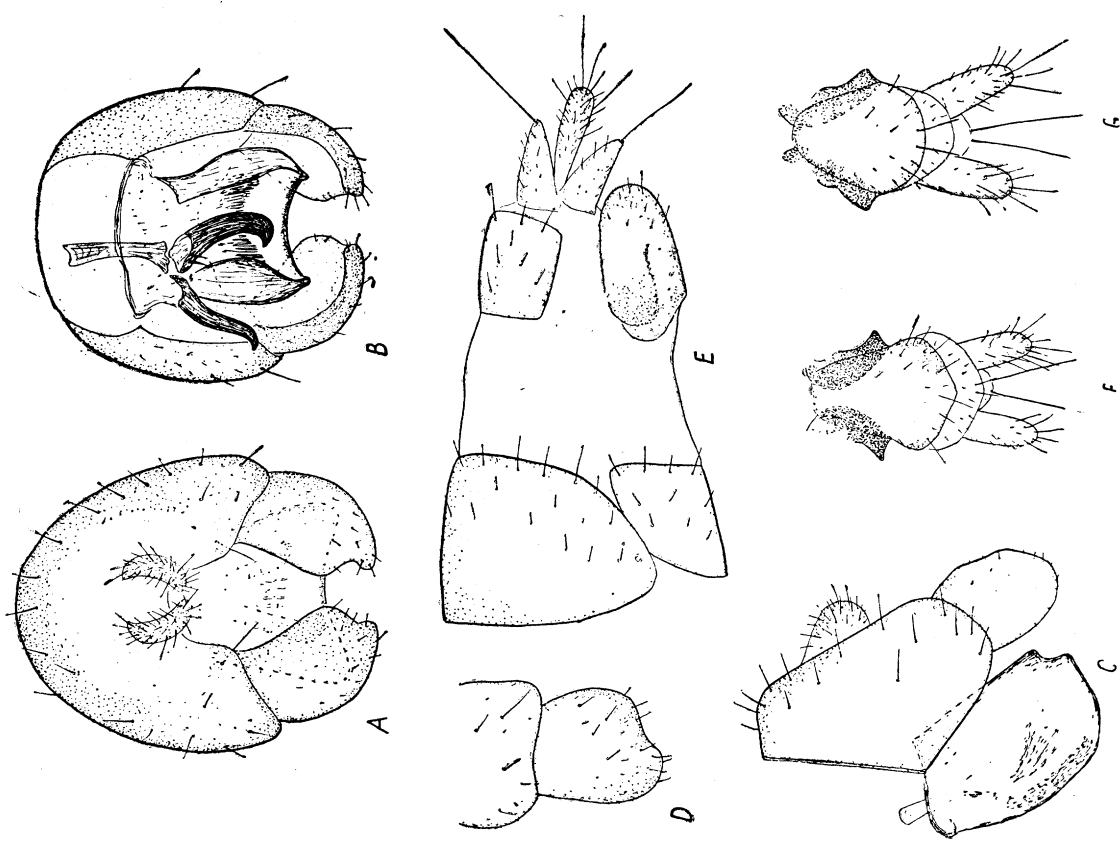


Fig. 11. *Minettia fasciata* (Fall.):

A — hypopygium, dorsal view; B — ditto, ventral view; C — ditto, lateral view; D — surstylus, dorsolateral view; E — apical part of female abdomen, lateral view; F, G — female terminalia with various forms of the eighth sternite, ventral view.

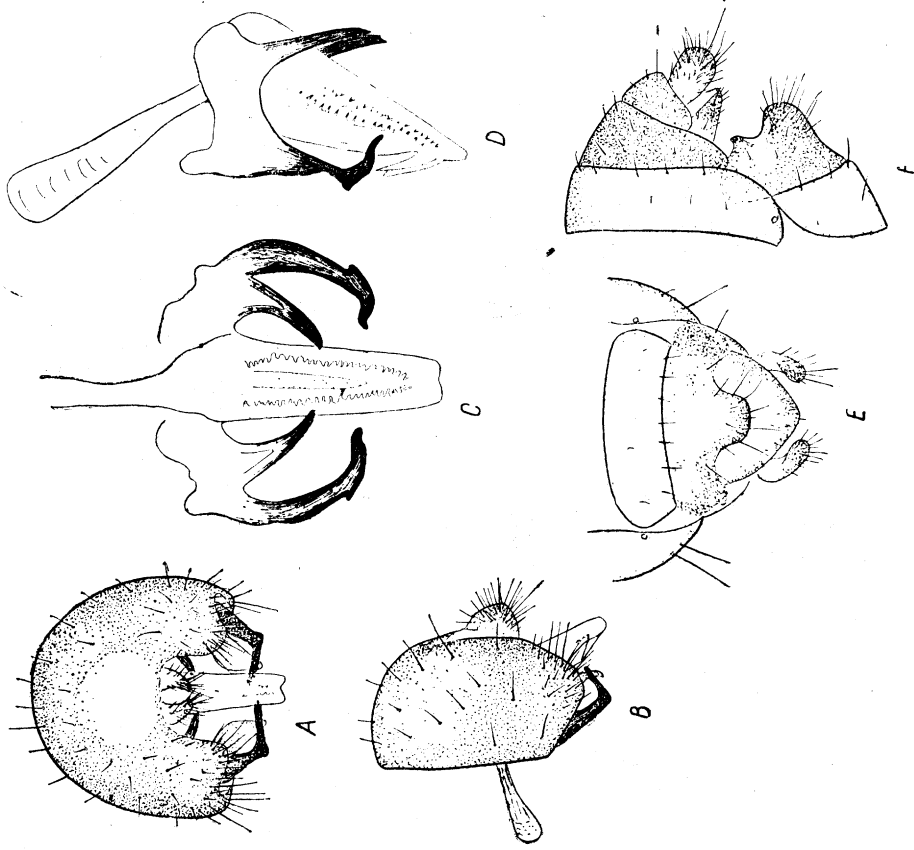


Fig. 13. *Minettia loewi* (Schin.):

A — hypopygium, dorsal view; B — ditto, lateral view; C — aedeagus with associated sclerites, ventral view; D — ditto, lateral view; E — apical part of female abdomen, ventral view; F — ditto, lateral view.

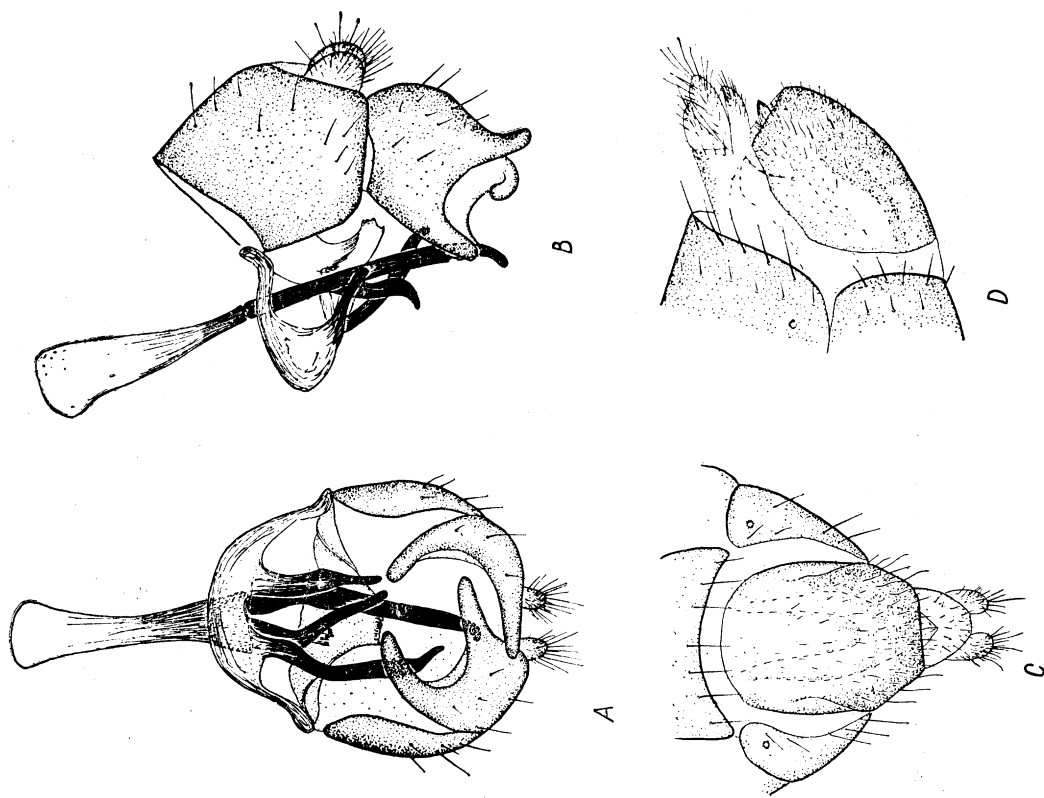


Fig. 14. *Minettia longipennis* (Fabr.):

A — hypopygium, ventral view; B — ditto, lateral view; C — apical part of female abdomen, ventral view; D — ditto, lateral view.

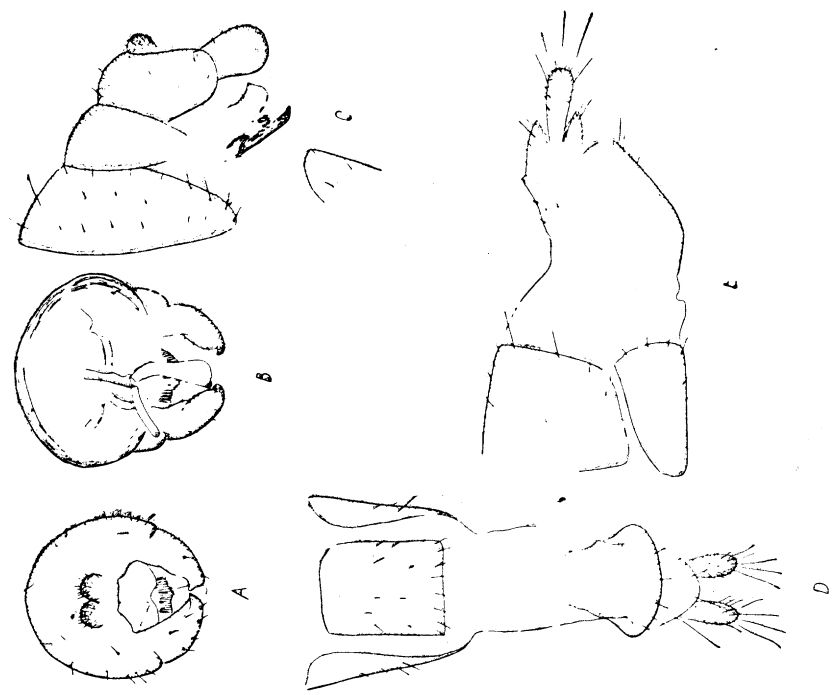


Fig. 15. *Minettia lupulina* (Fabr.):
 A — hypopygium, dorsal view; B — ditto, ventral view; C — hypopygium, protandrium and the sixth segment of abdomen; D — female terminalia, ventral view; E — ditto, lateral view.

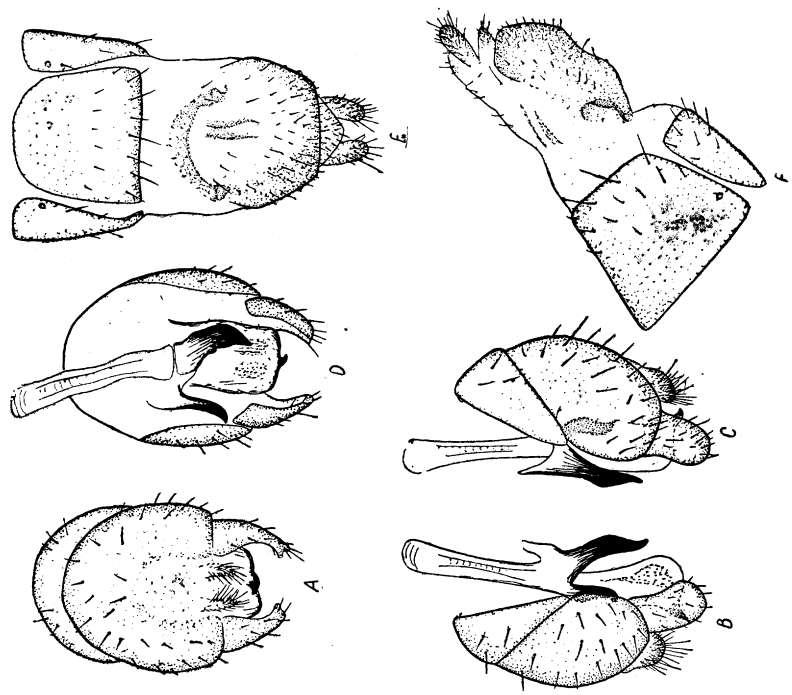


Fig. 16. *Minettia plumicornis* (Fall.):
 A — hypopygium with protandrium, dorsal view; B — ditto, right lateral view; C — ditto, left lateral view; D — ditto, ventral view; E — female terminalia, ventral view; F — ditto, lateral view.

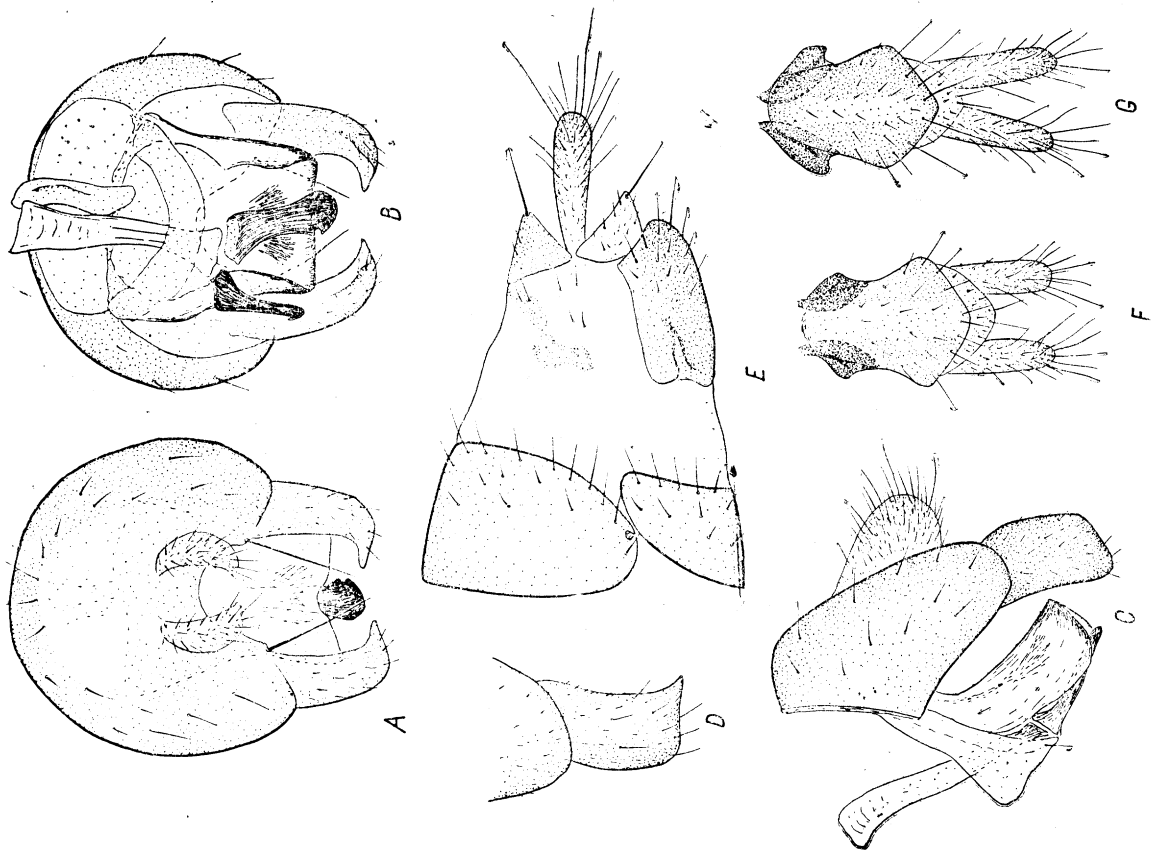


Fig. 17. *Minettia rivoza* (Meig.):

A — hypopygium, dorsal view; B — ditto, ventral view; C — ditto, lateral view; D — sursstylus, dorsolateral view; E — apical part of female abdomen, lateral view; F, G — female terminalia with various forms of the eighth sternite, ventral view.

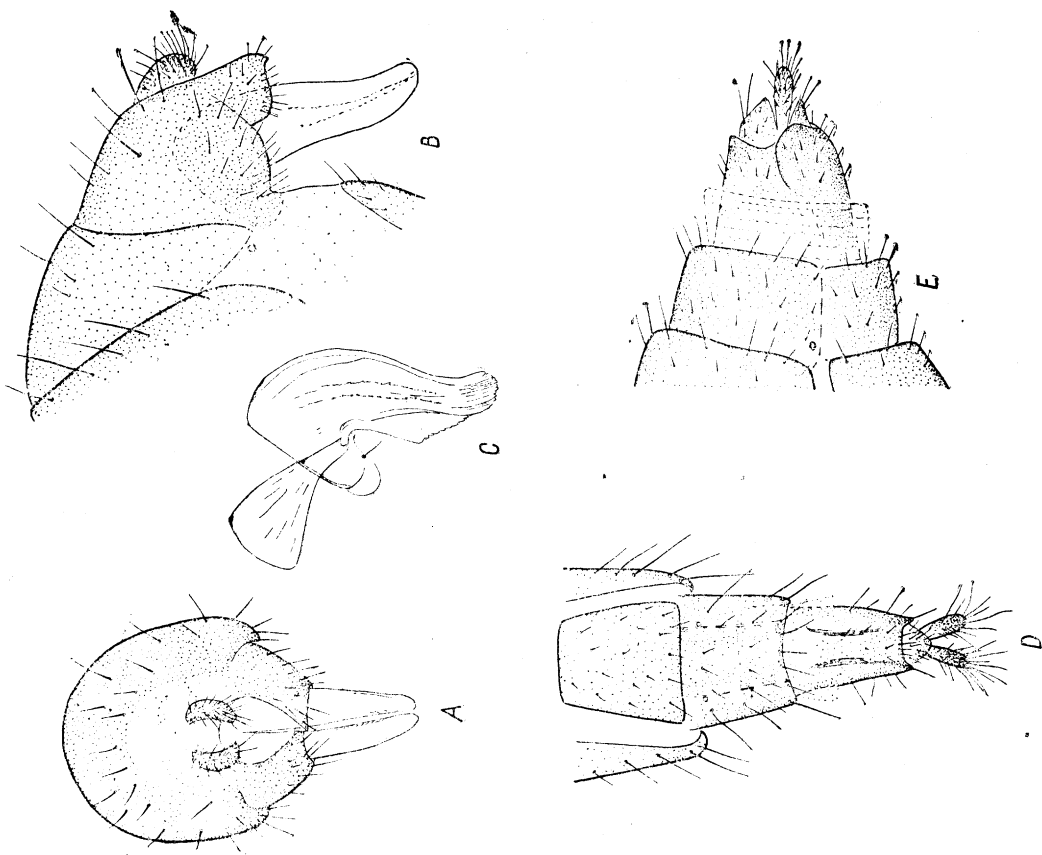


Fig. 18. *Trichotauxania praeusta* Fall.:

A — hypopygium, dorsal view; B — hypopygium, profandrium and the sixth segment (partly) of abdomen; C — aedeagus with associated structures; D — apical part of female abdomen, ventral view; E — ditto, lateral view.

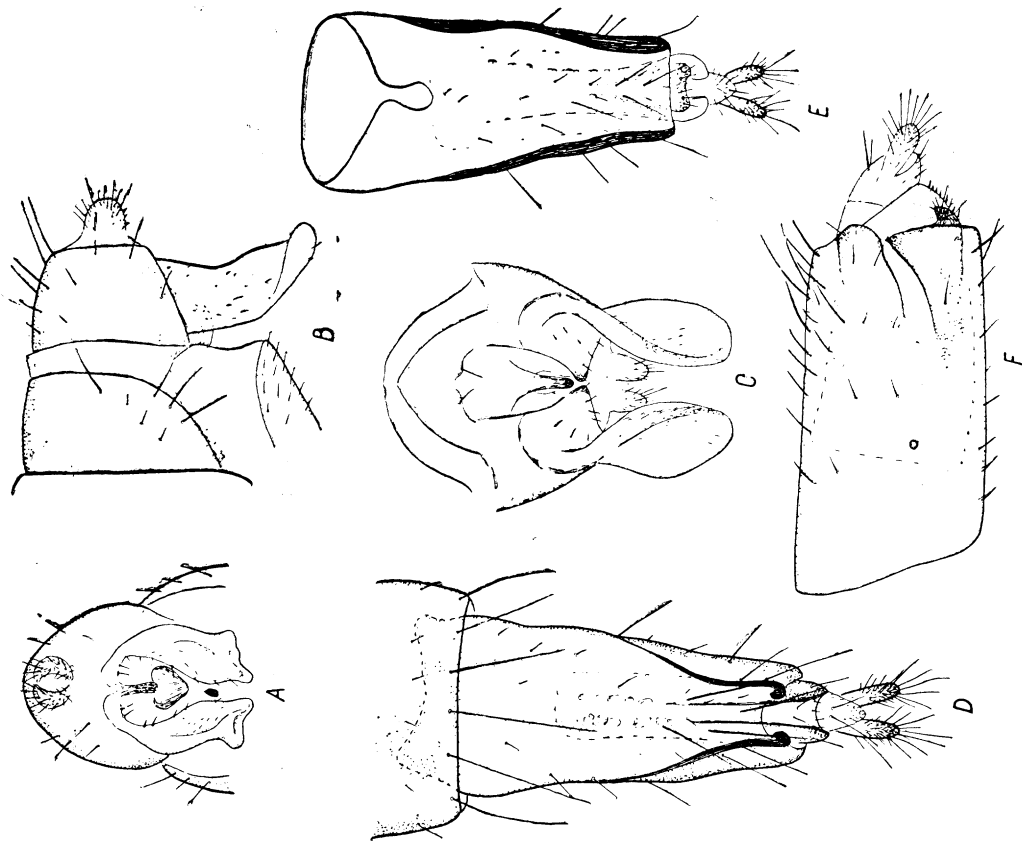


Fig. 19. *Autogastromyia anisodactyla* (Lw.):

A — hypopygium, dorsal view; B — apical part of male abdomen, lateral view; C — aedeagus with associated sclerites and cerci, ventral view; D — female terminalia, dorsal view; E — ditto, ventral view; F — ditto, lateral view.

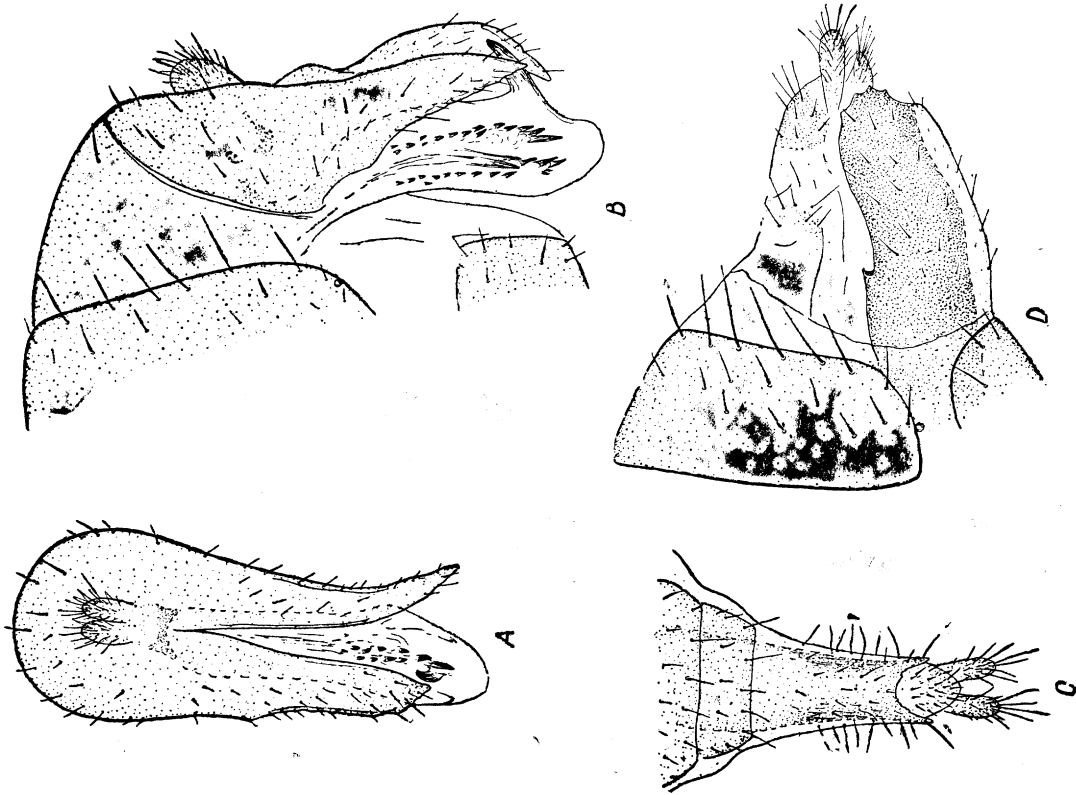


Fig. 20. *Eusapromyza baltioptera* Czerny:

A — hypopygium, dorsal view; B — hypopygium, profundarium and the sixth abdominal segment (partly), lateral view; C — female terminalia, ventral view; D — ditto, lateral view.

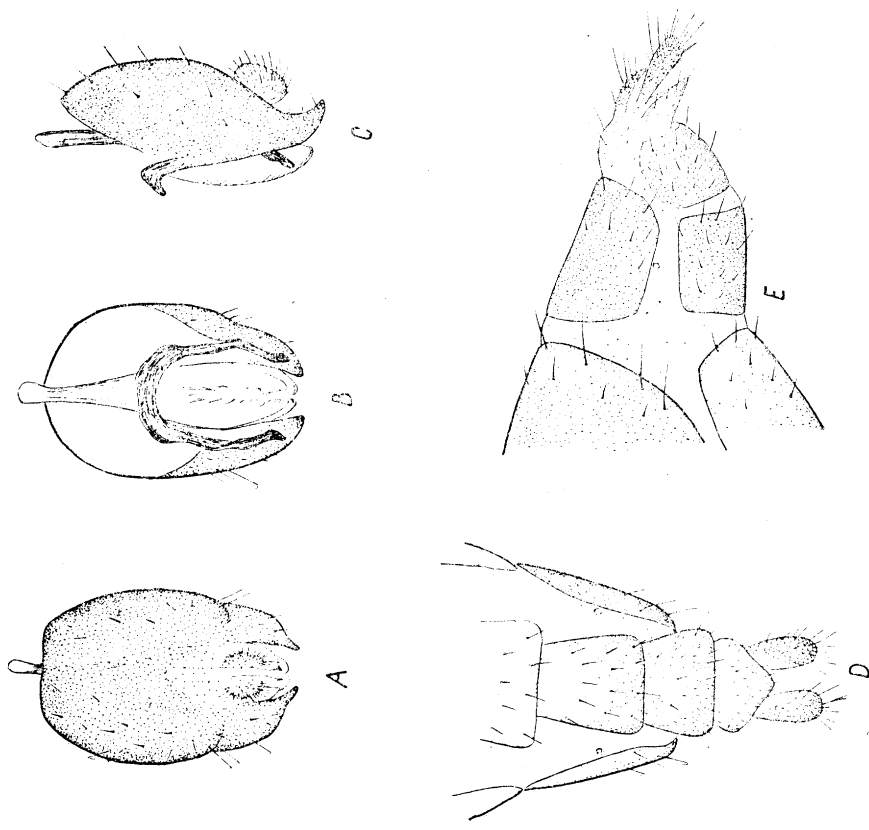


Fig. 22. *Cnemacantha muscaria* (Fall.):

A — hypopygium, dorsal view; B — ditto, ventral view; C — ditto, lateral view; D — apical part of female abdomen, ventral view; E — ditto, lateral view.

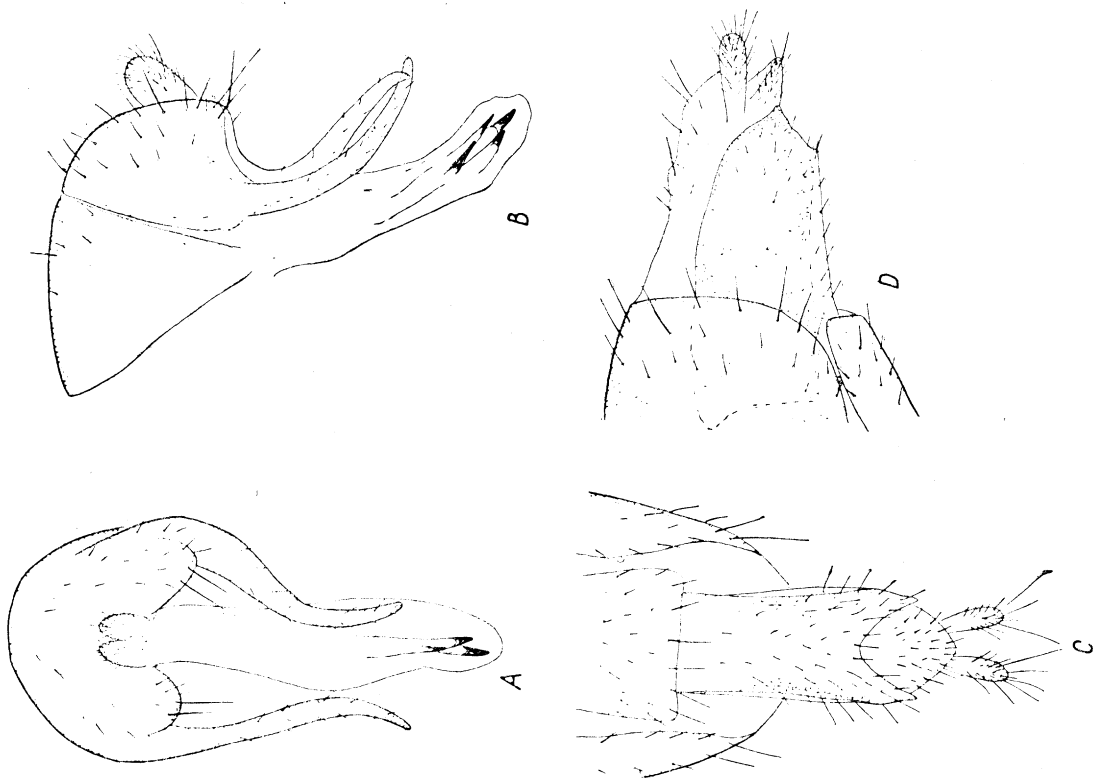


Fig. 21. *Eusapromyza multipunctata* (Fall.):

A — hypopygium, dorsal view; B — hypopygium and protandrium, lateral view; C — female terminalia, ventral view; D — ditto, lateral view.

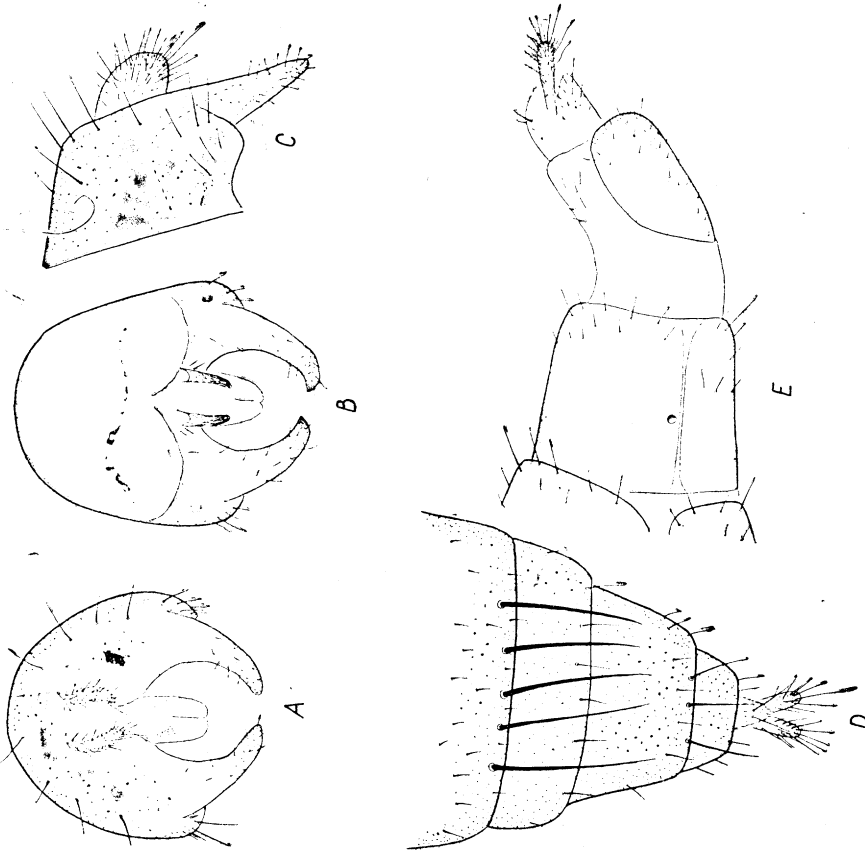


Fig. 23. *Lyciella affinis* (Zett.):

A — hypopygium, dorsal view; B — ditto, ventral view; C — ditto, lateral view; D — apical part of female abdomen, dorsal view; E — female terminalia, lateral view.

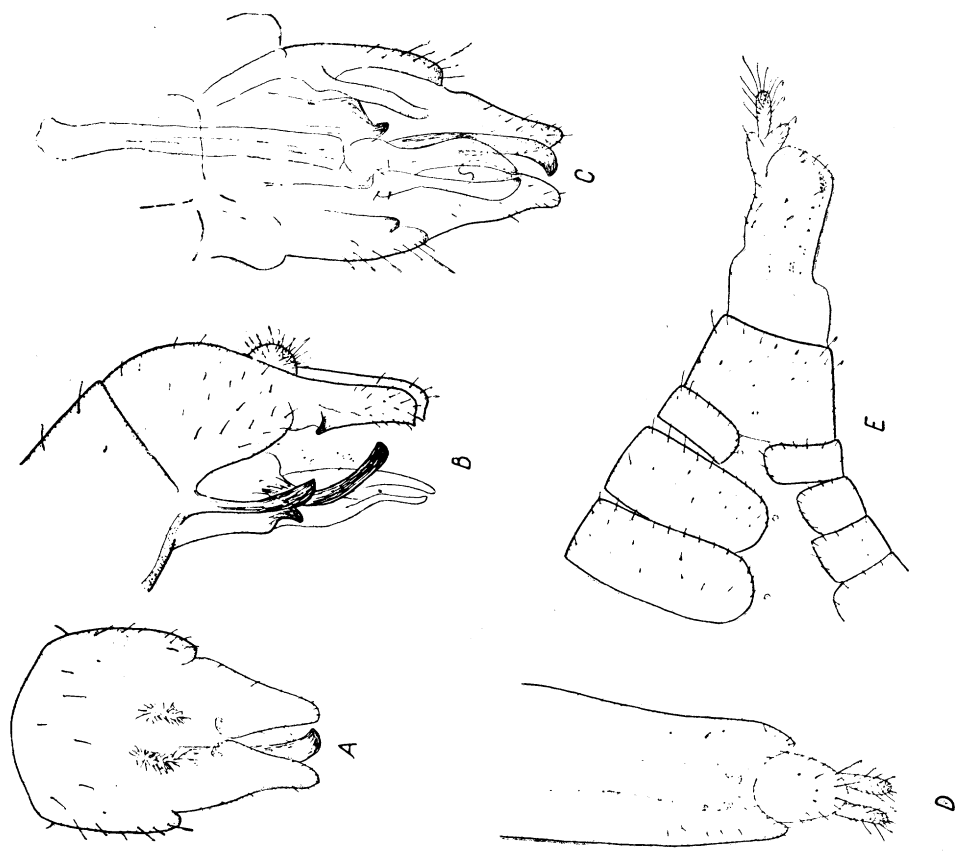


Fig. 24. *Lyciella decempunctata* (Fall.):

A — hypopygium, dorsal view; B — ditto, lateral view; C — ditto, ventral view; D — female terminalia, ventral view; E — apical part of female abdomen, lateral view.

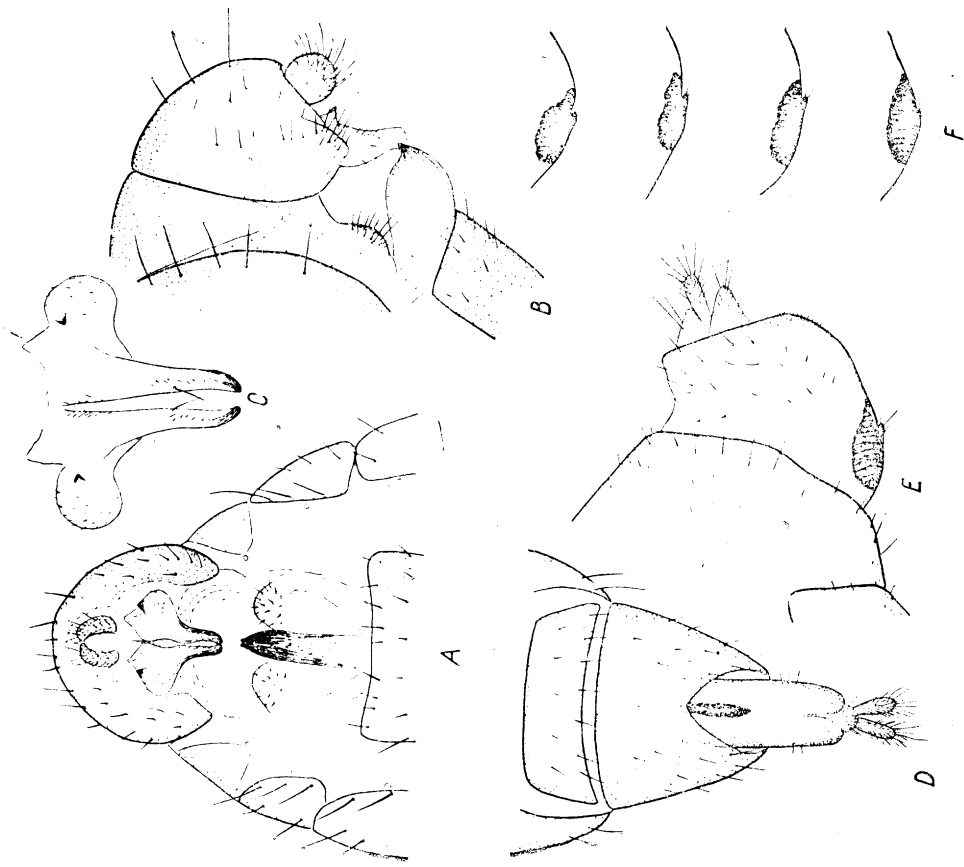


Fig. 25. *Lyciella decipiens* (Lw.):

A — apical part of male abdomen, ventral view; B — ditto, lateral view; C — surstyli (?), dorsal view; D — female terminalia, ventral view; E — ditto, lateral view; F — variation of pigmented area of the ninth sternite, lateral view.

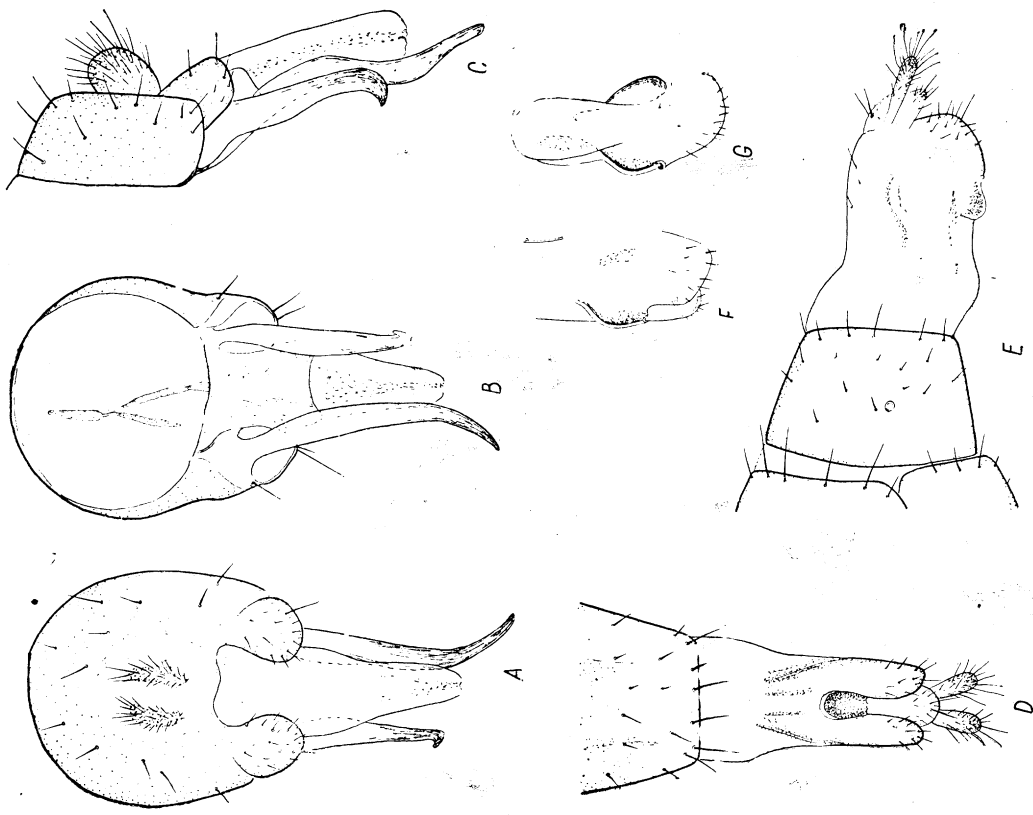


Fig. 26. *Lyciella illota* (Lw.)

A — hypopygium, dorsal view; B — ditto, ventral view; C — ditto, lateral view; D — female abdomen, ventral view; E — ditto, lateral view; F — the eighth sternite of female abdomen; laterally and somewhat ventrally, G — ditto, lateral view.

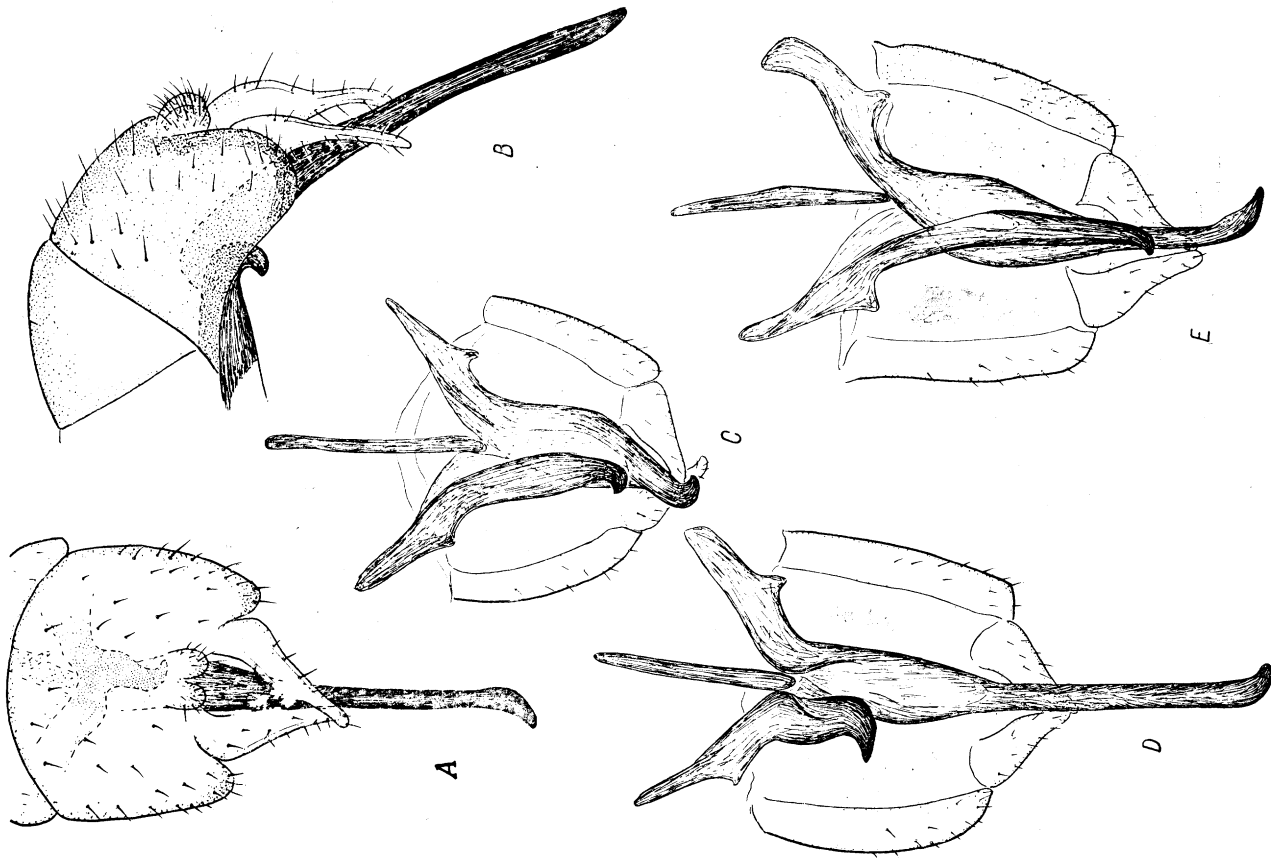


Fig. 27. *Lyciella pallidiventris* (Fall.), male.

A — hypopygium, dorsal view; B — hypopygium and protandrium, lateral view; C, D, E — hypopygiums, in ventral view, with various forms of gonopods.

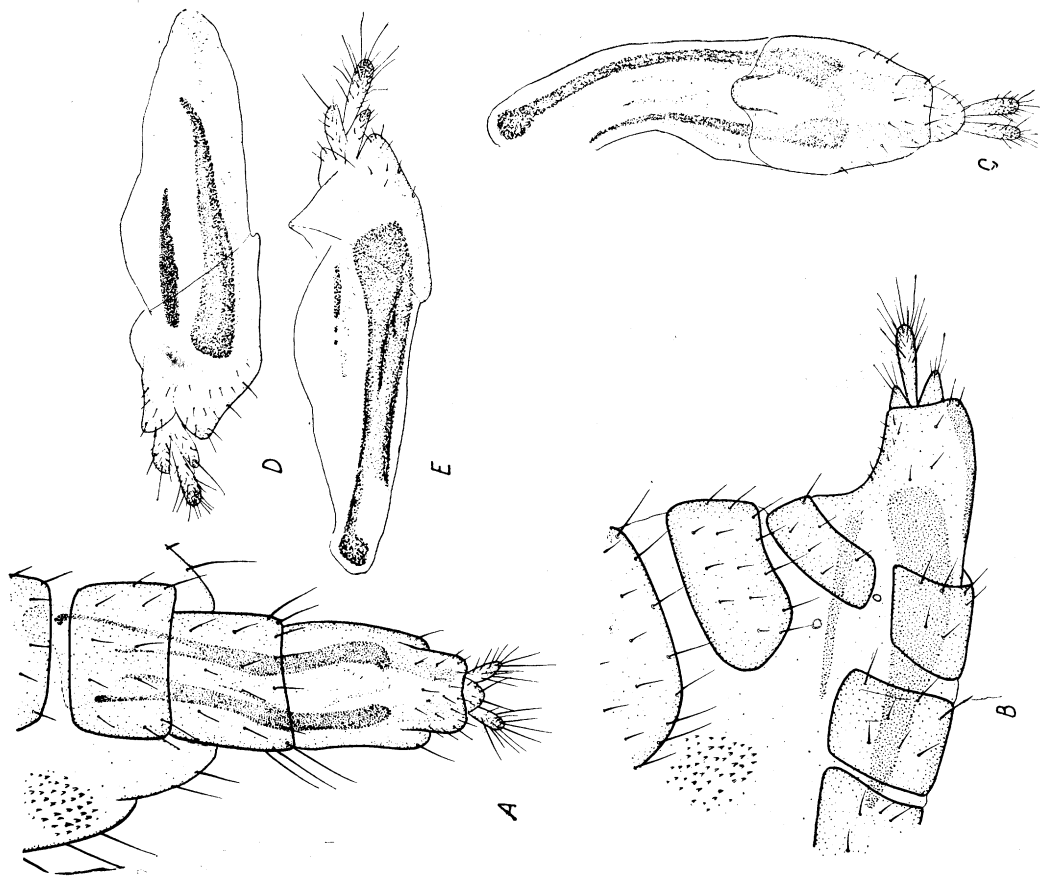


Fig. 28. *Lyciella pallidiventris* (Fall.), female.

A — apical part of abdomen, ventral view; B — ditto, lateral view; C — terminalia with inner sclerites, ventral view; D — ditto, right lateral view; E — ditto, left lateral view.

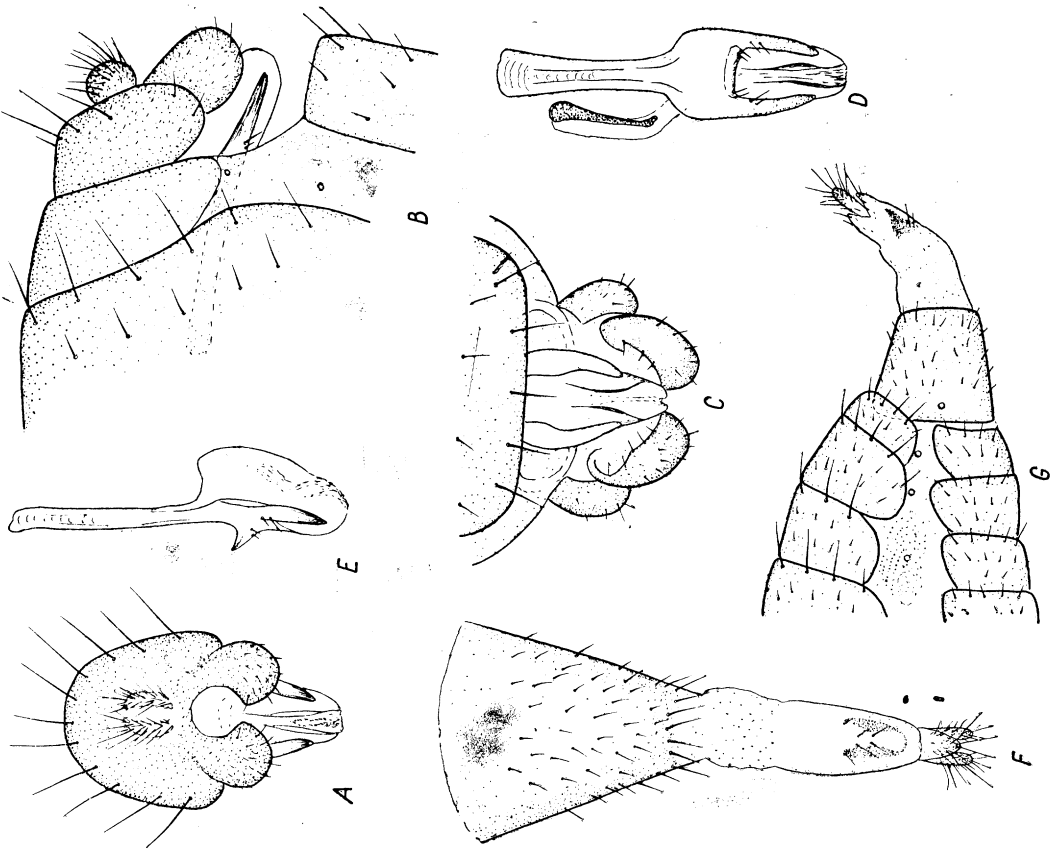


Fig. 29. *Lyciella platycephala* (Lw.):

A — hypopygium, dorsal view; B — hypopygium, protandrium and the sixth abdominal sclerite, lateral view; C — hypopygium, ventral view; D — aedeagus with associated structures, dorsal view; E — ditto, lateral view; F — female terminalia, ventral view; G — apical part of female abdomen, lateral view.

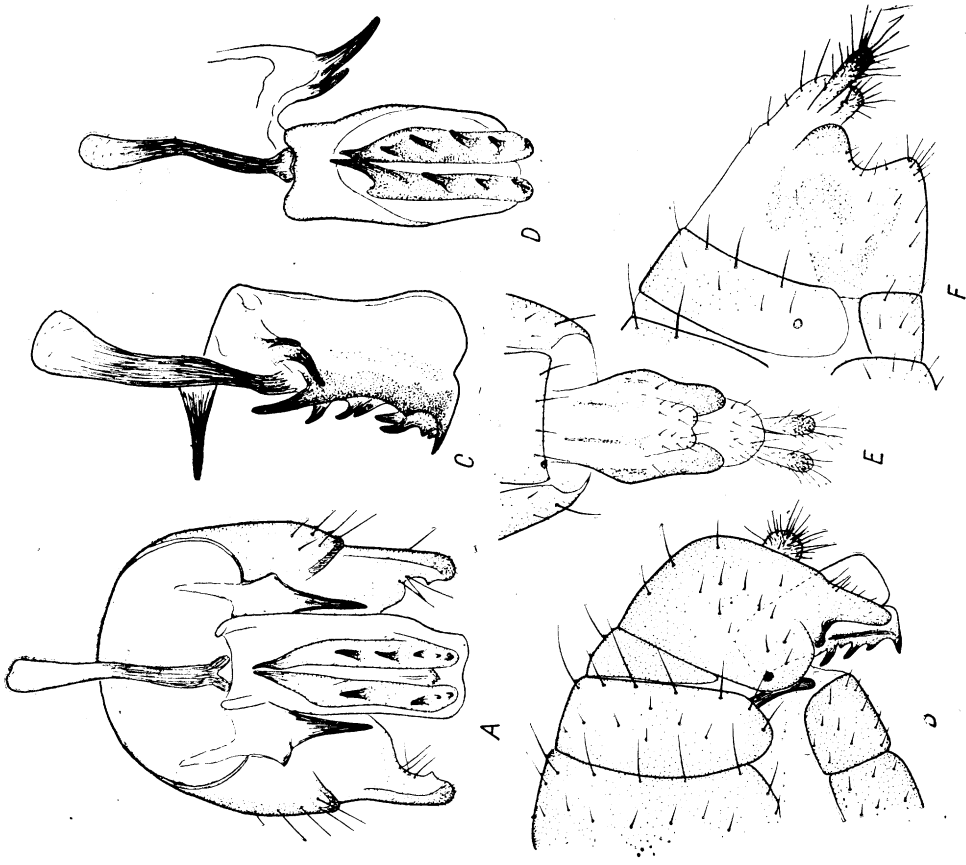


Fig. 30. *Lyciella quadrivittata* (Lw.):

A — hypopygium, ventral view; B — apical part of male abdomen, lateral view; C — inner sclerites of male genitalia, lateral view; D — ditto, ventral view; E — female terminalia, ventral view; F — ditto, lateral view.

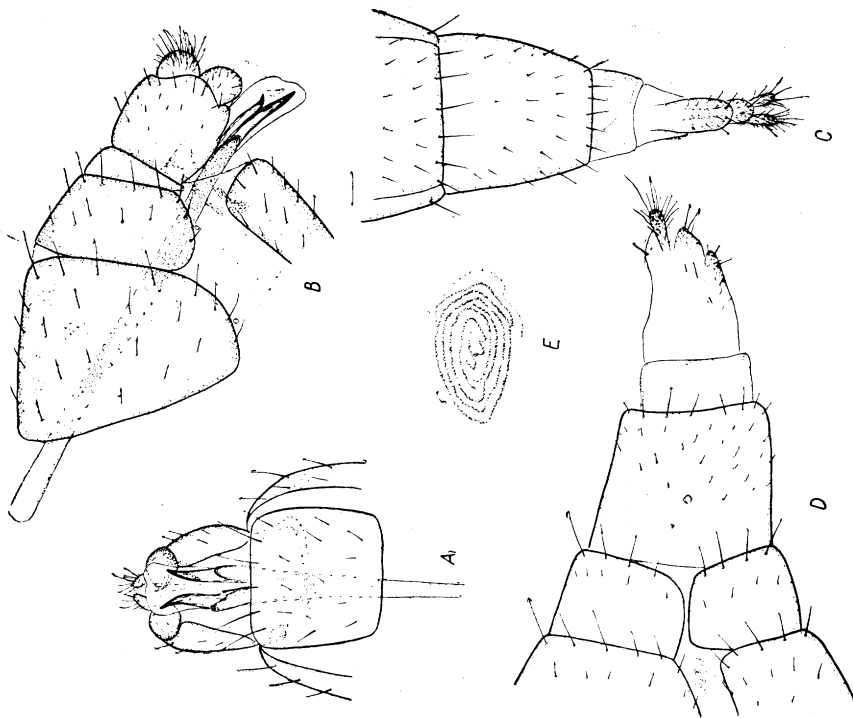


Fig. 31. *Lyciella rorida* (Fall.):

A — hypopygium and the sixth abdominal segment, ventral view; B — apical part of male abdomen, lateral view; C — apical part of female abdomen, ventral view; D — ditto, lateral view; E — eversible abdominal gland (term by Collin).

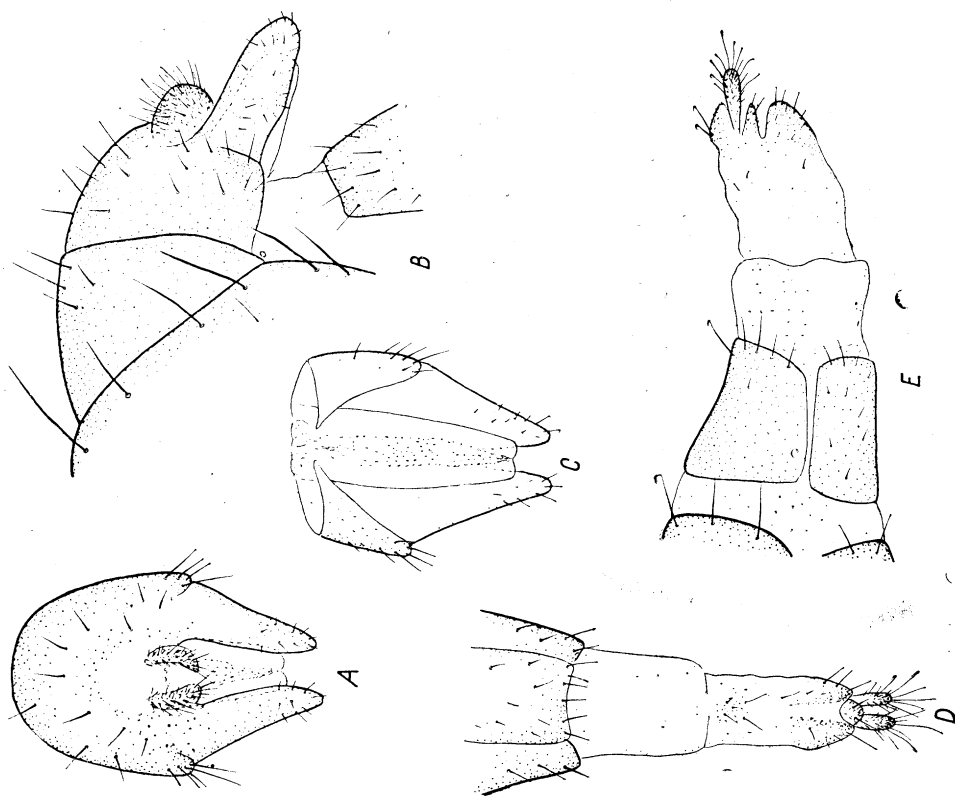


Fig. 32. *Lyciella subfasciata* Zett.:

A — hypopygium, dorsal view; B — hypopygium, protandrium and the sixth abdominal segment (partly), lateral view; C — hypopygium, ventral view; D — female terminalia, ventral view; E — ditto, lateral view.

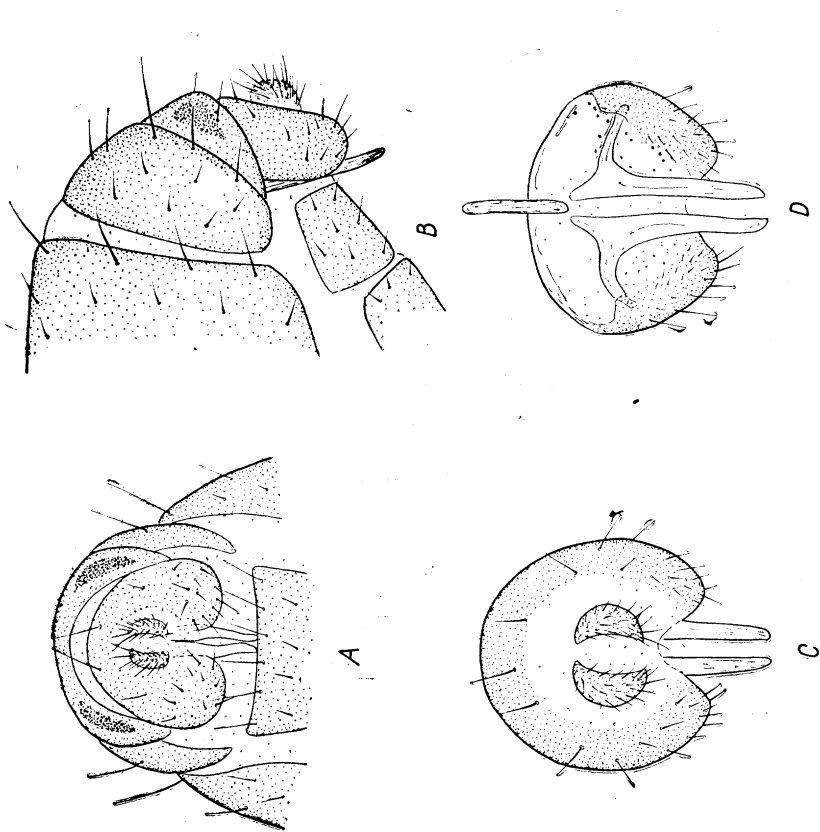


Fig. 33. *Sapromyza albiceps* Fall.:

A — apical part of male abdomen, ventral view; B — ditto, lateral view; C — hypopygium, dorsal view; D — ditto, ventral view.

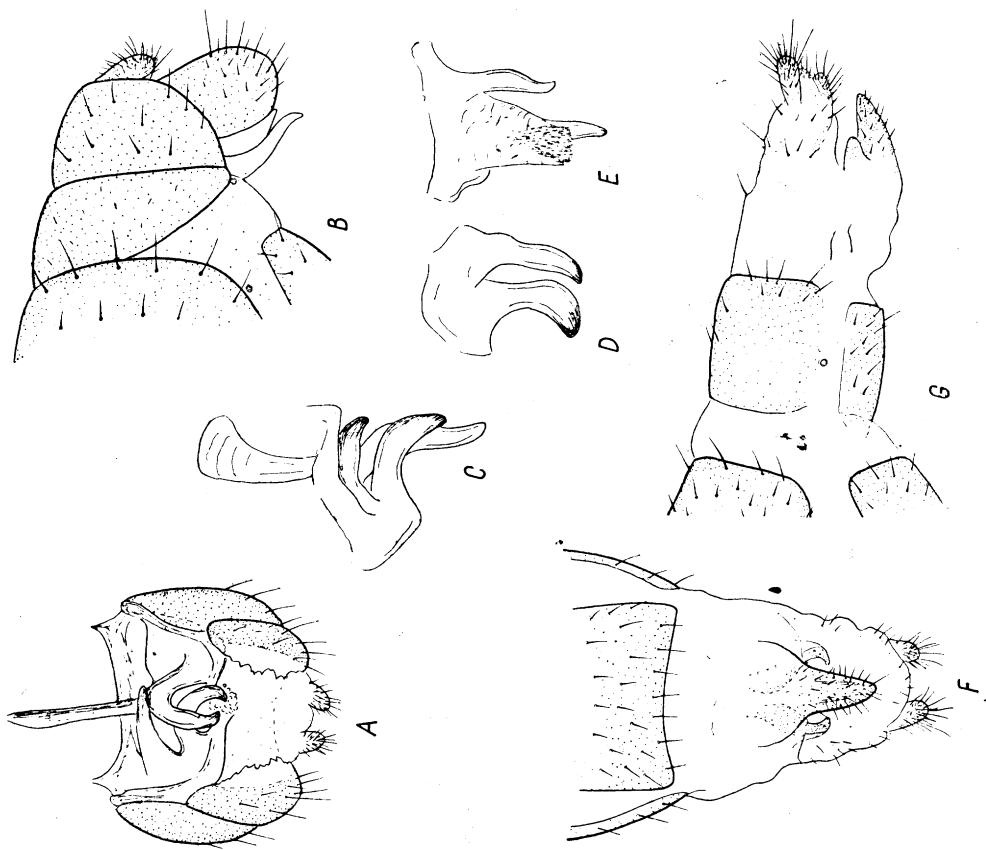


Fig. 34. *Sapromyza apicalis* Lw.:

A — hypopygium, ventral view; B — hypopygium, protandrium and the sixth abdominal segment, lateral view; C, D, E — aedeagus and associated sclerites; F — female terminalia, ventral view; G — ditto, lateral view.

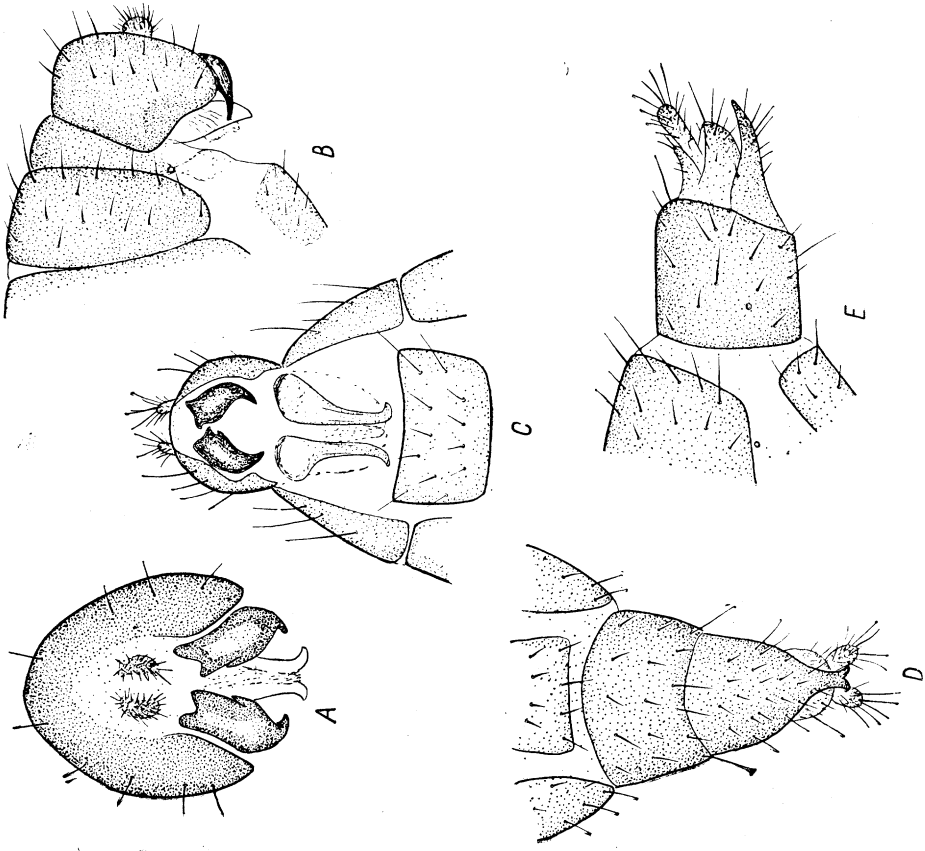


Fig. 36. *Sapromyza hyalinata* (Meig.):

A — hypopygium, dorsal view; B — apical part of male abdomen, lateral view; C — ditto, ventral view; D — female terminalia, ventral view; E — ditto, lateral view.

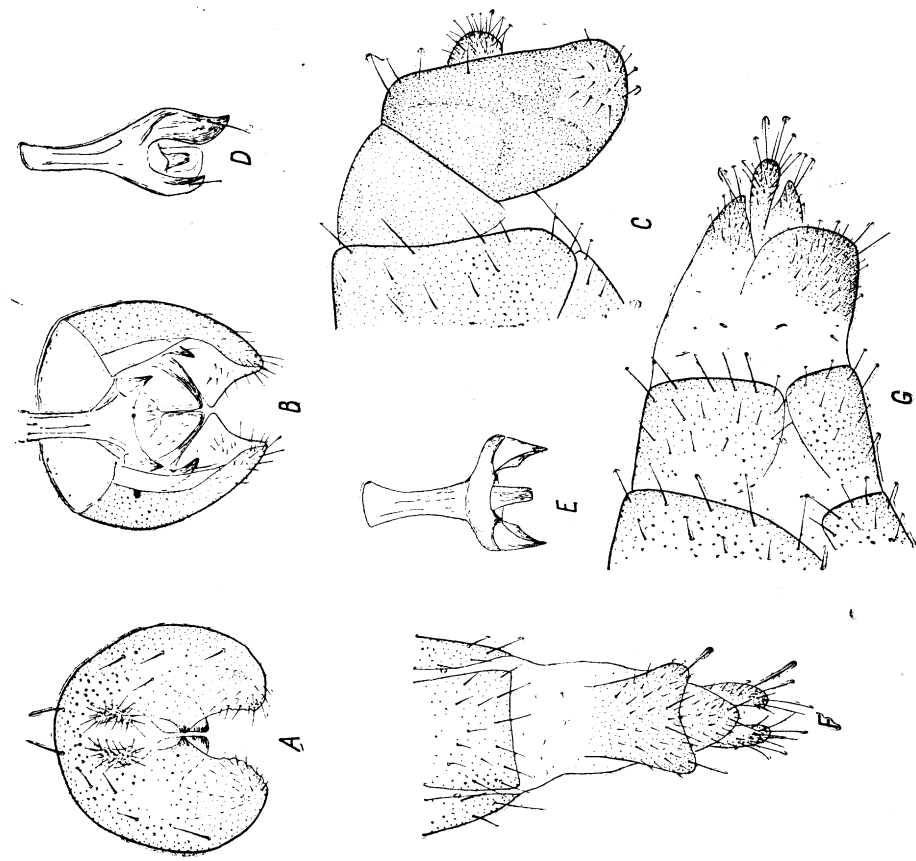


Fig. 35. *Sapromyza basalis* Zett.:

A — hypopygium, dorsal view; B — ditto, ventral view; C — hypopygium, proandrium and the sixth abdominal segment, lateral view; D — aedeagus with associated sclerites, ventrolateral view; E — ditto, dorsal view; F — female terminalia, ventral view; G — ditto, lateral view.

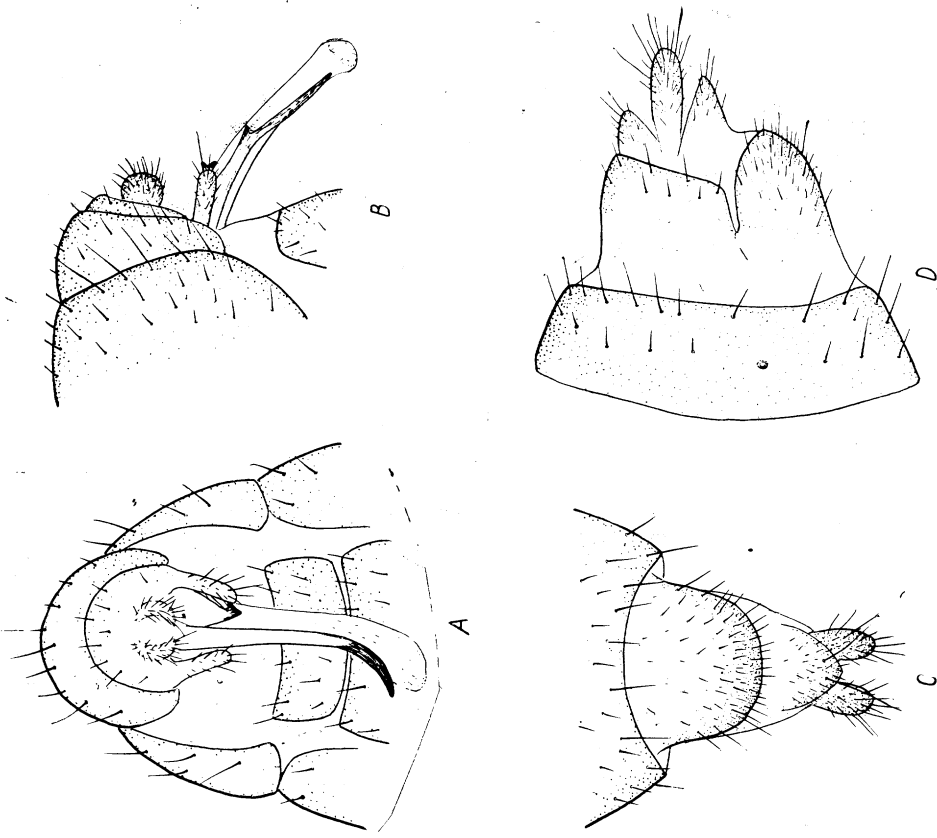


Fig. 37. *Sapromyza opaca* (Beck.):

A — apical part of male abdomen, ventral view; B — ditto, lateral view; C — female terminalia, ventral view; D — ditto, lateral view.

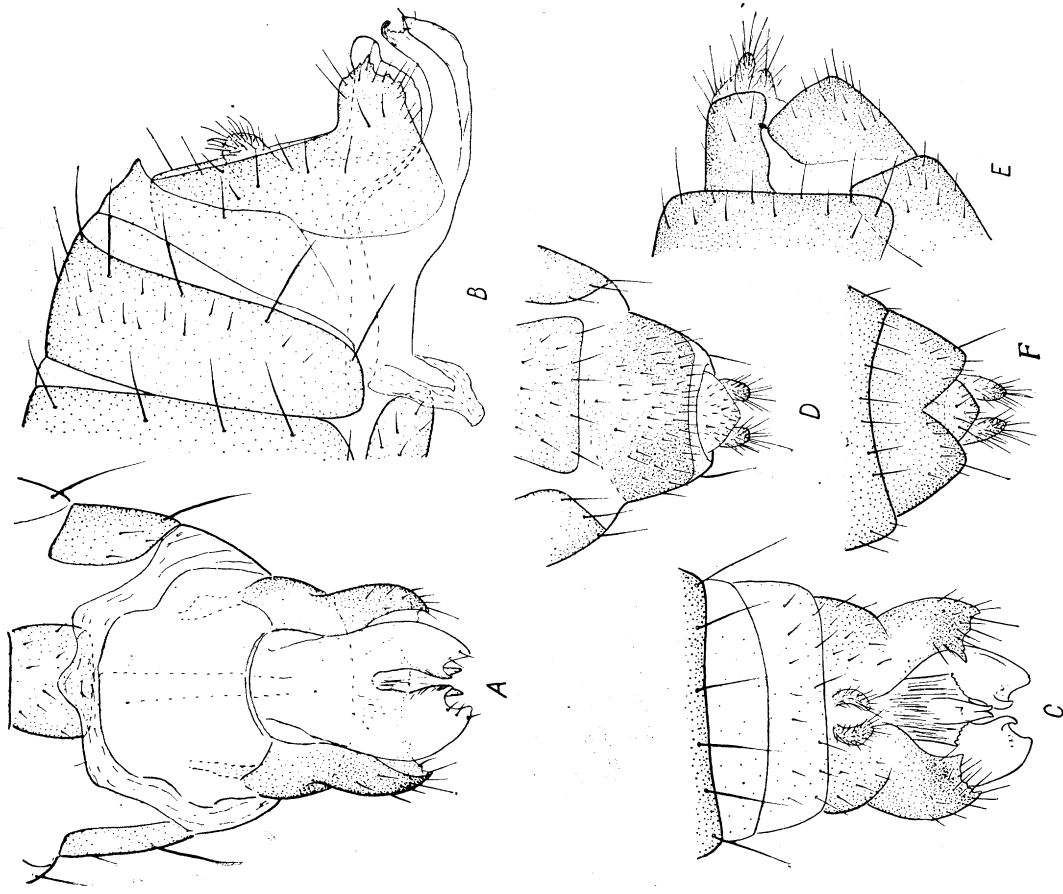


Fig. 38. *Sapromyza pellucida* Beck:

A — apical part of male abdomen, ventral view; B — ditto, lateral view; C — ditto, dorsal view; D — female terminalia, ventral view; E — ditto, lateral view; F — ditto, dorsal view.

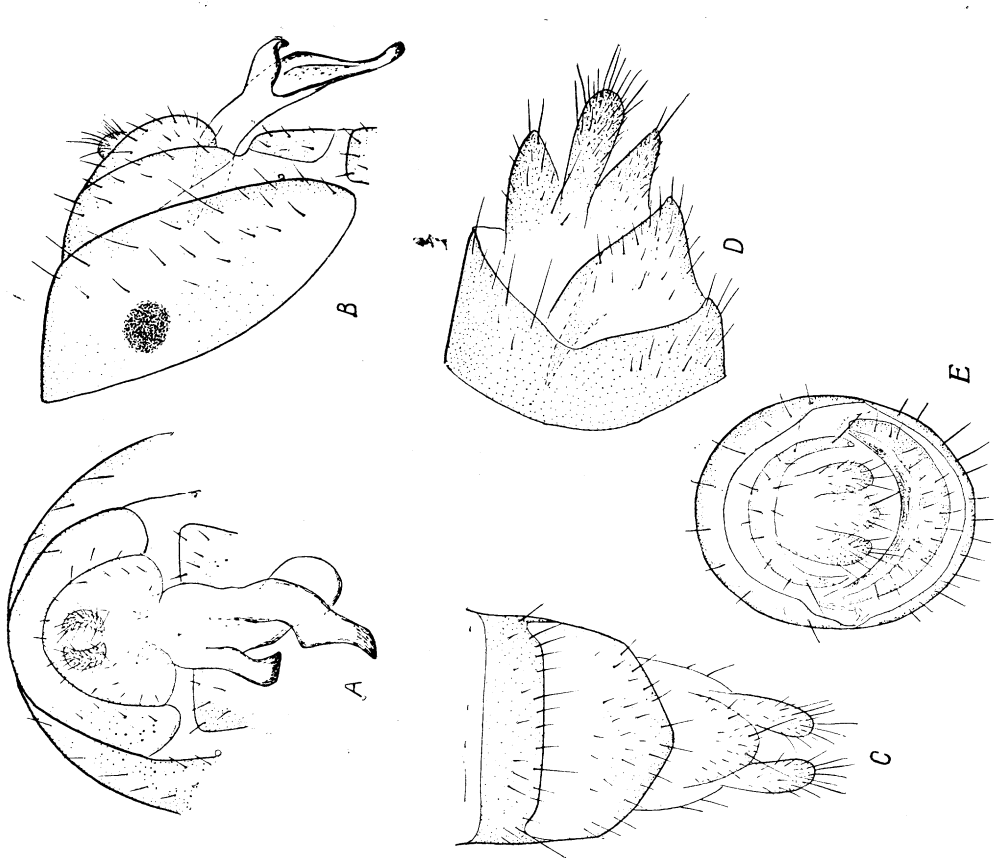


Fig. 39. *Sapromyza quadripunctata* L.:

A — apical part of male abdomen, ventral view; B — ditto, lateral view; C — female terminalia, ventral view; D — ditto, lateral view; E — ditto, caudal view.

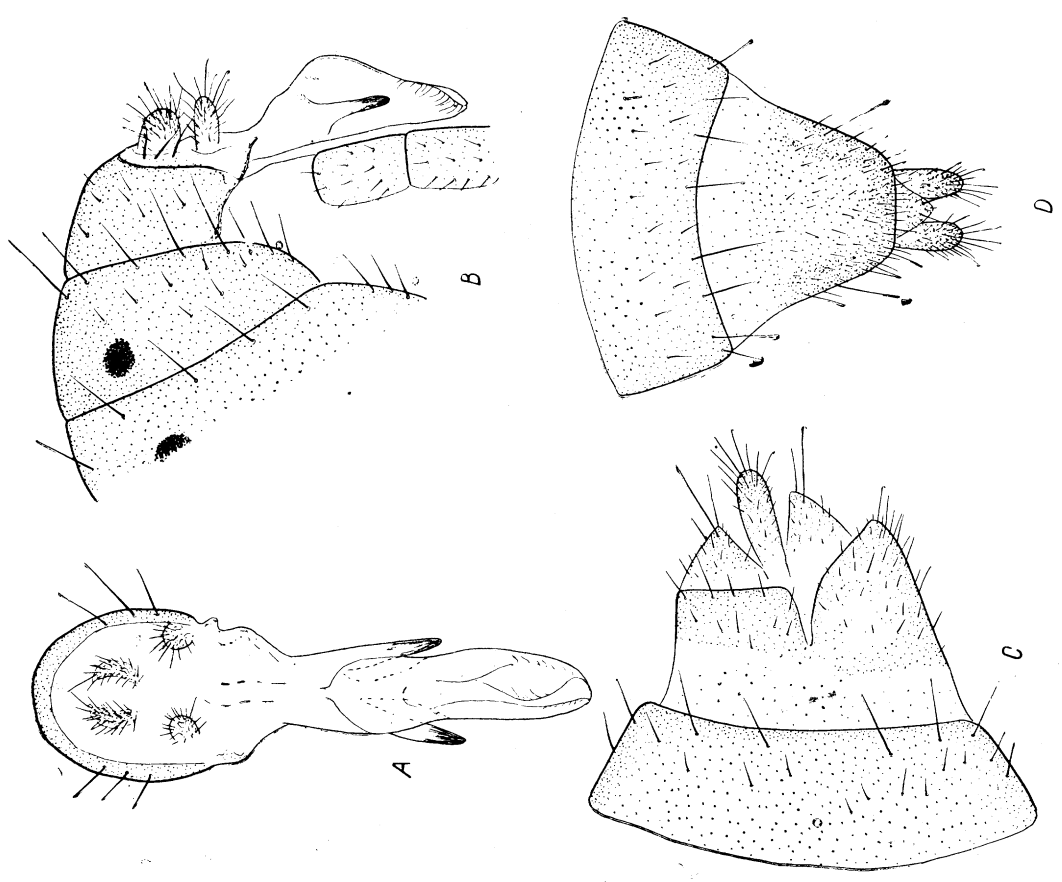


Fig. 40. *Sapromyza sexpunctata* Meig.:

A — hypopygium, dorsal view; B — apical part of male abdomen, lateral view; C — female terminalia, lateral view; D — ditto, ventral view.

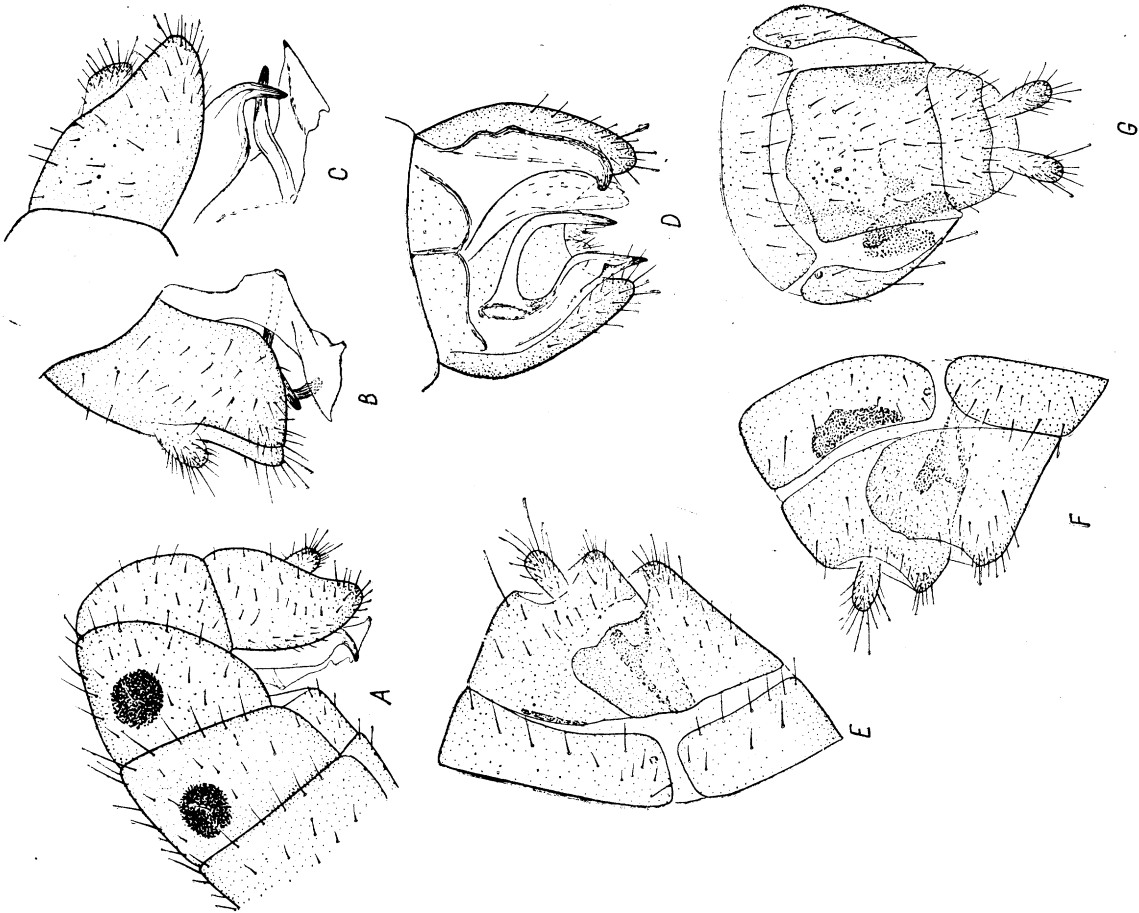


Fig. 41. *Sapromyza zetterstedtii* Hend.:

A — apical part of male abdomen; B — hypopygium, right lateral view; C — ditto, left lateral view; D — aedeagus with associated sclerites, left ventral view; E — female terminalia, left lateral view; F — ditto, right lateral view; G — ditto, ventral view.

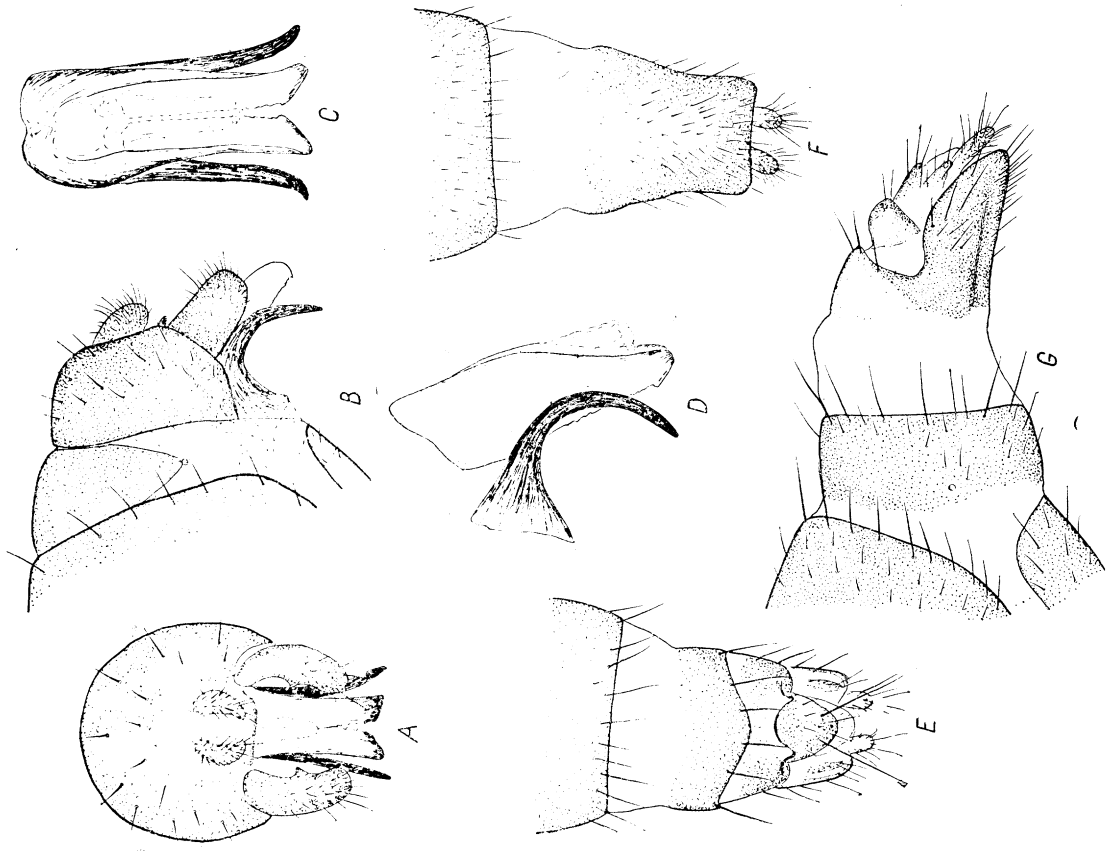


Fig. 42. *Calliopum acneum* (Fall.):

A — hypopygium, dorsal view; B — apical part of male abdomen, lateral view; C — aedeagus with associated sclerites, dorsal view; D — ditto, lateral view; E — female terminalia, dorsal view; F — ditto, ventral view; G — ditto, lateral view.

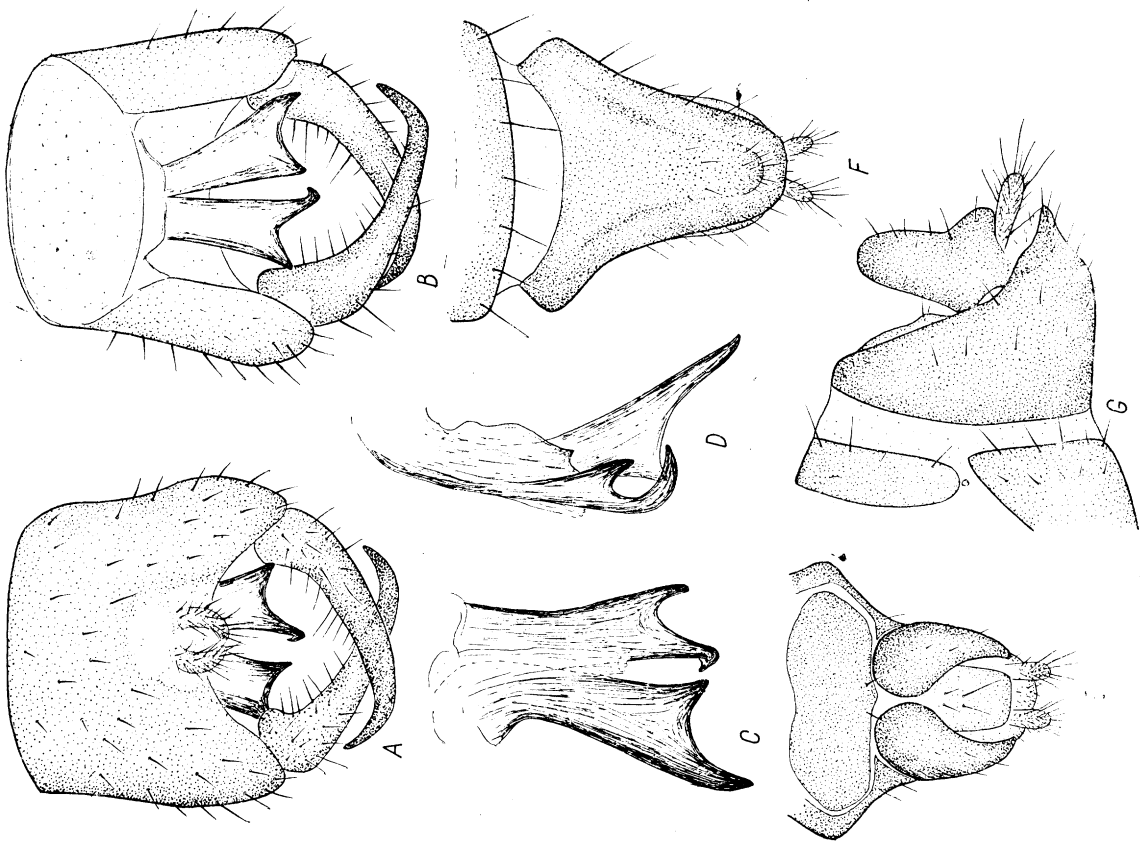


Fig. 43. *Calliopum elisae* (Meig.):

A — hypopygium, dorsal view; B — ditto, ventral view; C — aedeagus and gonopods, dorsal view; D — ditto, right lateral view; E — female terminalia, dorsal view; F — ditto, ventral view; G — ditto, lateral view.

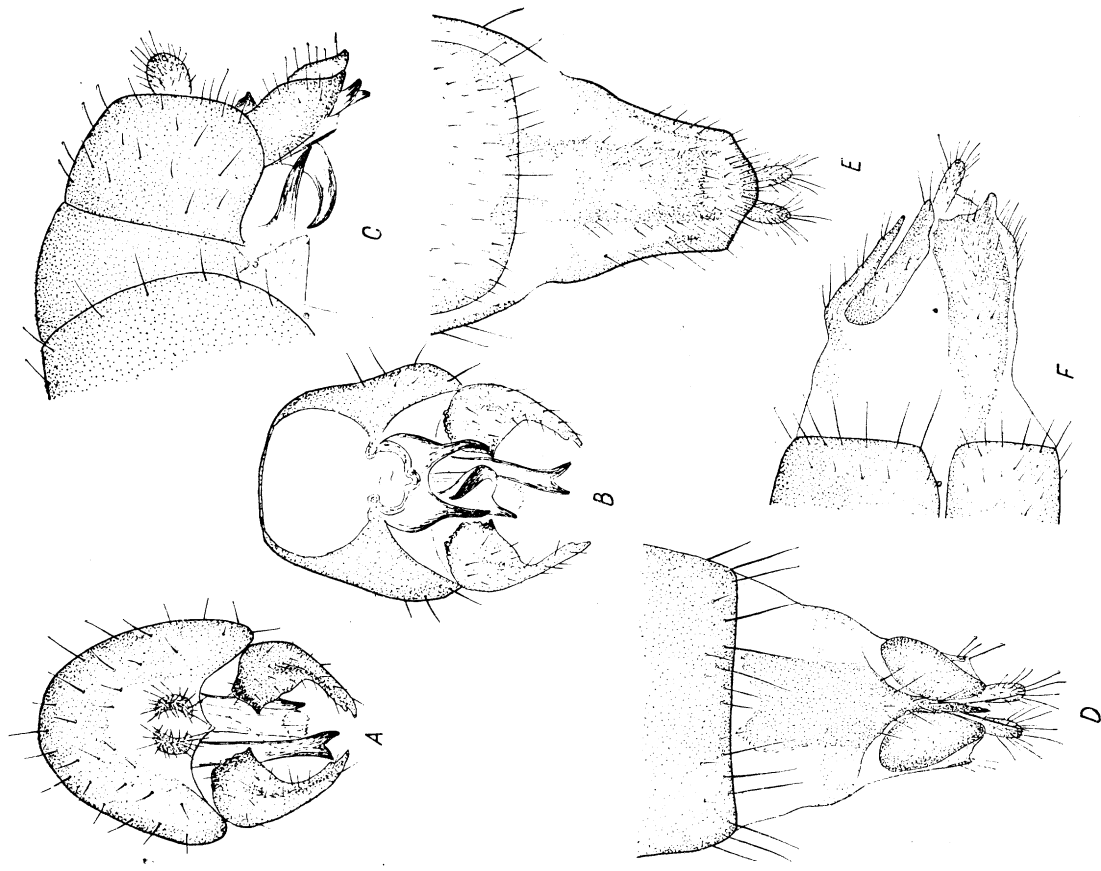


Fig. 44. *Calliopum similimum* Collin:

A — hypopygium, dorsal view; B — ditto, ventral view; C — apical part of male abdomen; D — female terminalia, dorsal view; E — ditto, ventral view; F — ditto, lateral view.

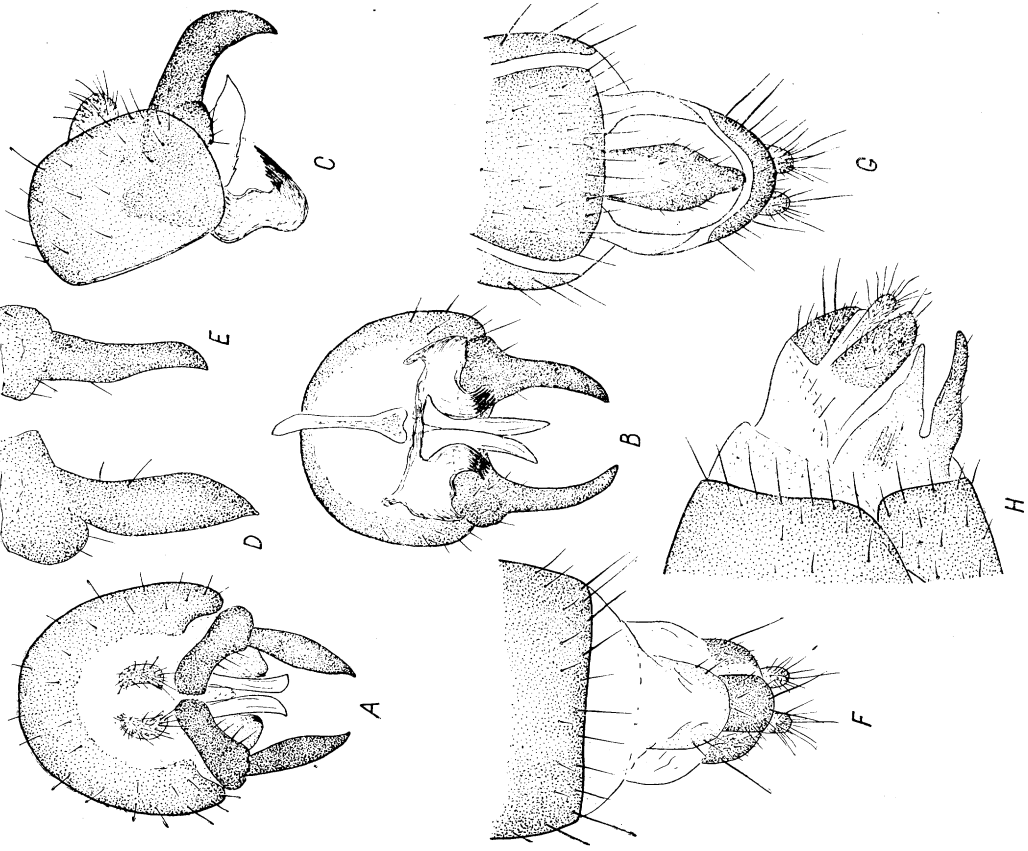


Fig. 45. *Lauxania cylindricornis* (Fabr.):

A — hypopygium, dorsal view; B — ditto, ventral view; C — ditto, lateral view; D, E — variation of surstylus; F — female terminalia, dorsal view; G — ditto, ventral view; H — ditto, lateral view.

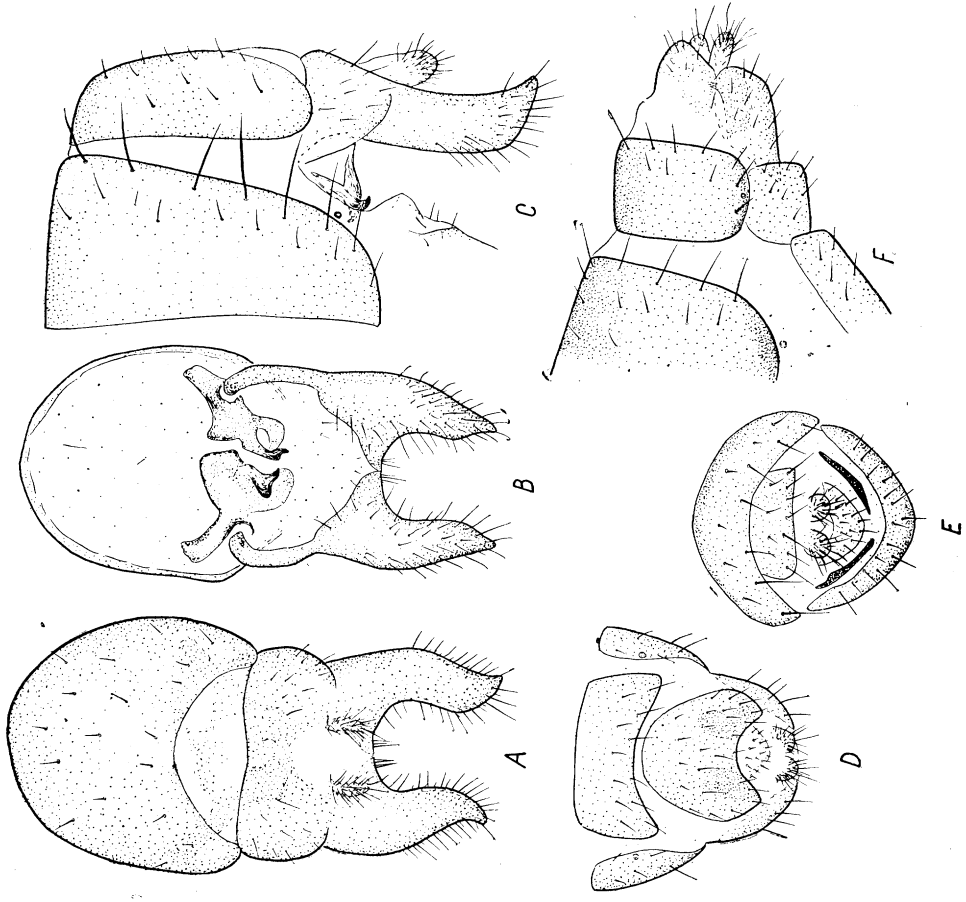


Fig 46. *Pachycerina seticornis* (Fall.):

A — hypopygium and profandrium, dorsal view; B — ditto, ventral view; C — hypopygium, profandrium and the sixth tergite, lateral view; D — female terminalia, ventral view; E — ditto, caudal view; F — ditto, lateral view.